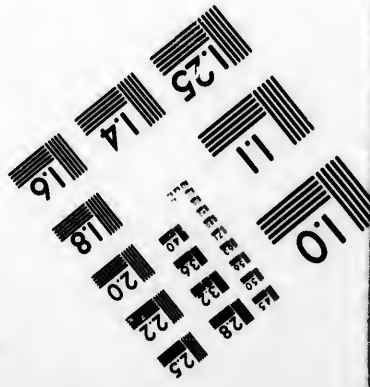
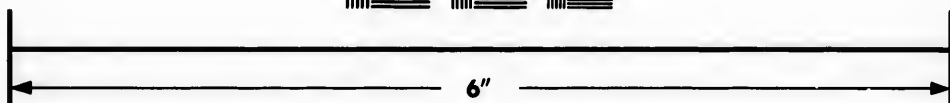
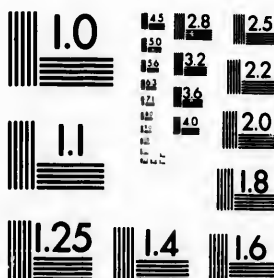


**IMAGE EVALUATION
TEST TARGET (MT-3)**



**Photographic
Sciences
Corporation**

23 WEST MAIN STREET
WEBSTER, N.Y. 14580
(716) 872-4503

14 128
16 132
18 22
20
22
25

**CIHM/ICMH
Microfiche
Series.**

**CIHM/ICMH
Collection de
microfiches.**



Canadian Institute for Historical Microreproductions / Institut canadien de microreproductions historiques

11
10
14

© 1981

Technical and Bibliographic Notes/Notes techniques et bibliographiques

The Institute has attempted to obtain the best original copy available for filming. Features of this copy which may be bibliographically unique, which may alter any of the images in the reproduction, or which may significantly change the usual method of filming, are checked below.

L'Institut a microfilmé le meilleur exemplaire qu'il lui a été possible de se procurer. Les détails de cet exemplaire qui sont peut-être uniques du point de vue bibliographique, qui peuvent modifier une image reproduite, ou qui peuvent exiger une modification dans la méthode normale de filmage sont indiqués ci-dessous.

- Coloured covers/
Couverture de couleur
- Covers damaged/
Couverture endommagée
- Covers restored and/or laminated/
Couverture restaurée et/ou pelliculée
- Cover title missing/
Le titre de couverture manque
- Coloured maps/
Cartes géographiques en couleur
- Coloured ink (i.e. other than blue or black)/
Encre de couleur (i.e. autre que bleue ou noire)
- Coloured plates and/or illustrations/
Planches et/ou illustrations en couleur
- Bound with other material/
Relié avec d'autres documents
- Tight binding may cause shadows or distortion along interior margin/
La reliure serrée peut causer de l'ombre ou de la distorsion le long de la marge intérieure
- Blank leaves added during restoration may appear within the text. Whenever possible, these have been omitted from filming/
Il se peut que certaines pages blanches ajoutées lors d'une restauration apparaissent dans le texte, mais, lorsque cela était possible, ces pages n'ont pas été filmées.
- Additional comments:
Commentaires supplémentaires:

- Coloured pages/
Pages de couleur
- Pages damaged/
Pages endommagées
- Pages restored and/or laminated/
Pages restaurées et/ou pelliculées
- Pages discoloured, stained or foxed/
Pages décolorées, tachetées ou piquées
- Pages detached/
Pages détachées
- Showthrough/
Transparence
- Quality of print varies/
Qualité inégale de l'impression
- Includes supplementary material/
Comprend du matériel supplémentaire
- Only edition available/
Seule édition disponible
- Pages wholly or partially obscured by errata slips, tissues, etc., have been refilmed to ensure the best possible image/
Les pages totalement ou partiellement obscurcies par un feuillet d'errata, une pelure, etc., ont été filmées à nouveau de façon à obtenir la meilleure image possible.

This item is filmed at the reduction ratio checked below/
Ce document est filmé au taux de réduction indiqué ci-dessous.

10X	14X	18X	22X	26X	30X
<input type="checkbox"/>	<input type="checkbox"/>	<input type="checkbox"/>	<input type="checkbox"/>	<input type="checkbox"/>	<input checked="" type="checkbox"/>
12X	16X	20X	24X	28X	32X

The copy filmed here has been reproduced thanks to the generosity of:

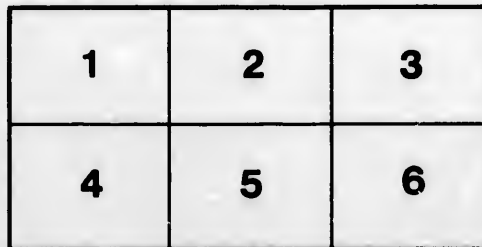
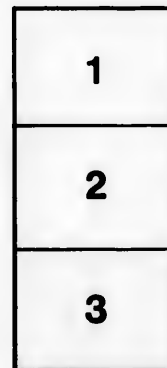
Metropolitan Toronto Library
Canadian History Department

The images appearing here are the best quality possible considering the condition and legibility of the original copy and in keeping with the filming contract specifications.

Original copies in printed paper covers are filmed beginning with the front cover and ending on the last page with a printed or illustrated impression, or the back cover when appropriate. All other original copies are filmed beginning on the first page with a printed or illustrated impression, and ending on the last page with a printed or illustrated impression.

The last recorded frame on each microfiche shall contain the symbol → (meaning "CONTINUED"), or the symbol ∇ (meaning "END"), whichever applies.

Maps, plates, charts, etc., may be filmed at different reduction ratios. Those too large to be entirely included in one exposure are filmed beginning in the upper left hand corner, left to right and top to bottom, as many frames as required. The following diagrams illustrate the method:



L'exemplaire filmé fut reproduit grâce à la générosité de:

Metropolitan Toronto Library
Canadian History Department

Les images suivantes ont été reproduites avec le plus grand soin, compte tenu de la condition et de la netteté de l'exemplaire filmé, et en conformité avec les conditions du contrat de filmage.

Les exemplaires originaux dont la couverture en papier est imprimée sont filmés en commençant par le premier plat et en terminant soit par la dernière page qui comporte une empreinte d'impression ou d'illustration, soit par le second plat, selon le cas. Tous les autres exemplaires originaux sont filmés en commençant par la première page qui comporte une empreinte d'impression ou d'illustration et en terminant par la dernière page qui comporte une telle empreinte.

Un des symboles suivants apparaîtra sur la dernière image de chaque microfiche, selon le cas: le symbole → signifie "A SUIVRE", le symbole ∇ signifie "FIN".

Les cartes, planches, tableaux, etc., peuvent être filmés à des taux de réduction différents. Lorsque le document est trop grand pour être reproduit en un seul cliché, il est filmé à partir de l'angle supérieur gauche, de gauche à droite, et de haut en bas, en prenant le nombre d'images nécessaire. Les diagrammes suivants illustrent la méthode.

ails
du
odifier
une
mage

errata
to

pelure,
n à







Souvenir
5th ANNUAL CONVENTION
of The
CANADIAN ASSOCIATION of STATIONARY ENGINEERS.
TORONTO
1894

Printed and Published by the Executive Council



Presented to

11.

BY THE

EXECUTIVE COUNCIL OF THE CANADIAN ASSOCIATION OF STATIONARY ENGINEERS.



SOUVENIR NUMBER

OF THE

FIFTH ANNUAL CONVENTION

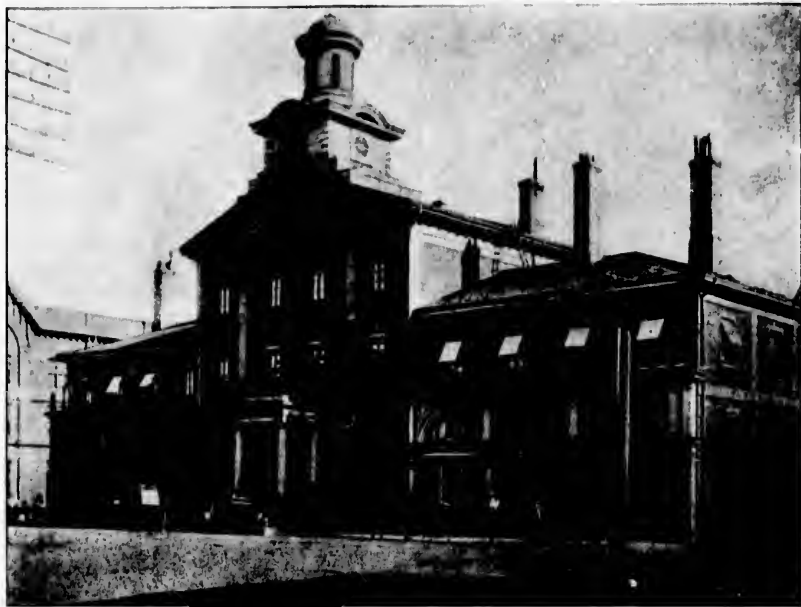
OF THE

CANADIAN ASSOCIATION OF STATIONARY ENGINEERS.

TORONTO, 1894.

K 30880

April 27 1956



CITY HALL, TORONTO.

✧ CANADIAN ASSOCIATION OF STATIONERY ENGINEERS ✧

EXECUTIVE COUNCIL.

PRESIDENT	GEORGE HUNT	Montreal, Que.
VICE-PRESIDENT	WM. SUTTON	Toronto, Ont.
SECRETARY	JOHN J. YORK	Montreal, Que.
TREASURER	W. G. BLACKGROVE	Toronto, Ont.
CONDUCTOR	THOS. KING	Dresden, Ont.
DOORKEEPER	F. ROBERT	Ottawa, Ont.
PROVINCIAL DEPUTY for the Province of Quebec	THOS. RYAN	Montreal, Que.
PROVINCIAL DEPUTY for the Province of Ontario	A. E. EDKINS	Toronto, Ont.
PROVINCIAL DEPUTY for the Province of Manitoba	CHAS. E. ROBERTSON	Winnipeg, Man.
DISTRICT DEPUTY for the City of Toronto	A. M. WICKENS	Toronto, Ont.
DISTRICT DEPUTY for the City of Montreal	J. A. HARTENSTEIN	Montreal, Que.



BRANCHES.

TORONTO BRANCH No. 1. Meets 2nd and 4th Friday each month in Room D, Shaftesbury Hall. Wilson Phillips, President; H. E. Terry, Secretary, 19 Hayter Street.

HAMILTON BRANCH No. 2. Meets 1st and 3rd Friday each month in Macalister's Hall. Jos. Langdon, President; Wm. Norris, Corresponding Secretary, 211 Wellington Street North.

BRANTFORD BRANCH No. 3.—John Hoy, President; Samuel H. Weir, Secretary.
BRANTFORD BRANCH No. 4. Meets 2nd and 4th Friday each month. Thos. Pilgrim, President; Joseph Ogle, Secretary, Brantford Cardage Co.

LONDON BRANCH No. 5.—Meets in Sherwood Hall first Thursday and last Friday in each month. F. Mitchell, President; William Meaden, Secretary-Treasurer, 533 Richmond Street.

MONTREAL BRANCH No. 1.—Meets 1st and 3rd Thursday each month, in Engineers' Hall, Craig Street. President, Jos. Robertson; First Vice-President, H. Nuttall; Second Vice-President, Jos. Badger; Secretary, J. J. York; Board of Trade Building; Treasurer, Thos. Ryan.

ST. LAURENT BRANCH No. 2. Meets 1st and 3rd Tuesday each month in Engineers' Hall, Craig Street. A. Doolan, President; Alfred Labour, Secretary, 306 De'Isle Street, St. Cuneonde.

BRANDON, MAN., BRANCH No. 1. Meets 1st and 3rd Friday each month, in City Hall. A. R. Crawford, President; Arthur Fleming, Secretary.

QUEBEC BRANCH No. 6. Meets 1st and 3rd Wednesday each month at 7:30 p.m. A. Jordan, President; H. T. Howelling, Secretary, Box No. 8.

OTTAWA BRANCH No. 7. Meets 2nd and 4th Tuesday each month, corner Bank and Sparks Streets. Frank Robert, President; F. Merrill, Secretary, 352 Wellington Street.

DRESDEN BRANCH No. 8.—Meets every 2nd week in each month. Thos. Merrill, Secretary.

BERLIN BRANCH No. 9. Meets 2nd and 4th Saturday each month at 8 p.m. W. J. Rhodes, President; G. Steinmetz, Secretary, Berlin, Ont.

KINGSTON BRANCH No. 10.—Meets 1st and 3rd Tuesday in each month in Leaver Hall, King Street, at 8 p.m. J. Devlin, President; A. Strong, Secretary.

WINSTON BRANCH No. 11.—President, Chas. E. Robertson; Recording Secretary, L. Bramble; Financial Secretary, Arthur Harper.

KINCARDINE BRANCH No. 12. Meets every Tuesday at 8 o'clock, in the Engineers' Hall, Waterworks. President, Jos. Walker; Secretary, A. Scott.

WATERLOO BRANCH No. 13.—President, Wm. Giddock; Recording Secretary, Ed. Dunham.

PETERBOROUGH BRANCH No. 14. Meets 2nd and 4th Wednesday in each month. S. Butler, President; C. Robins, Vice-President; W. Sharp, engineer steam laundry, Charlotte Street, Secretary.

TO THE PUBLIC
And Especially to our many Friends.



Presenting this work to you, a few words explaining the reason it is issued and also its objects may not be amiss.

Last year some of the Montreal members conceived the idea of commemorating our Fourth Annual Convention held in that city, by publishing a work similar to this, and at the same time giving their friends an opportunity of advertising their goods in a manner that would reach directly and appeal with considerable force to the very men on whom they depended for a large amount of business. That it was a good medium for advertising there can be no doubt, as is proven by the many congratulatory letters in the possession of that body and the many repeat orders we have received for space in this work.

The Executive Council assembled in Convention at Montreal during the time of its issue, suggested the idea of procuring all rights in it from the Montreal Association and publishing it this year in the interest of the Association throughout the Dominion. This idea was at once agreed to by Montreal No. 1, who immediately transferred all rights and property to this Council, all of which we consider ample reason for its issue this year.

As to its objects, they are almost identical with those of last year, except that its beneficial effects will spread over a larger area, and consequently do more good.

We are the only body of men in this Dominion that are organized solely for the purposes of mutual education and instruction. This fact alone should be sufficient inducement for business men of all kinds to back up any of our undertakings, as it is patent to everyone that the better a man is educated the better citizen he is: the better he is educated the higher up in his profession or calling will he reach, and the more will he be sought after, and in this manner will his interests advance. This is our policy and our platform on the Labour question. Let every man try to make himself a better man and the wages will surely increase, with little or no effort on his part. It is only a question of time when steam users in general will insist that their engineer shall hold a certificate of membership in this Association. We take no part in politics. It matters not who is in power or who is not. It matters not to us what creed or form of faith a man may follow, so long as he tries to live up to one or other, as experience sheweth a Christian man is more to be depended on than one who is not. We simply try to educate one another in all matters pertaining to our calling.

We are also the only body of men who are willing and even anxious to pay a tax to the Government for the privilege of following our trade or calling, as evidenced by our continued efforts to impress upon them the necessity of compelling all engineers in charge of steam plants to hold a

certificate of competency, for which they shall pay a certain sum annually according to the grade of certificate issued. This is also an incentive to engineers to push upward, that the grade of certificate may be raised from time to time. This can best be achieved by joining the Association and giving close attention to its teachings. We are always ready to answer any and all questions on engineering subjects that may be submitted to us.

We would also wish to draw the attention of steam users to this point: All our branches, and this council in particular, are ready at all times to give any steam user the benefit of our experience when about to purchase a new plant or make alterations, or point out defects when the owner has reason to think he is burning more coal than he should. He may submit these questions through his engineer, or by letter to any of our secretaries, when they will receive prompt attention.

Believing that we have made our objects sufficiently clear, we would now say a word to those engineers who have not yet joined our Association.

No man is so learned that he has nothing more to learn. We therefore give ear to anyone having knowledge of that greatest science Steam Engineering. We are also well aware

that an engineer who desires to hold his position or get promoted must be qualified for the business, be brave, energetic, punctual, vigilant, sober, educated, and well informed on all new discoveries and inventions of the day, and must adopt all the qualities of the shrewd business man.

In conclusion we extend to all *bona fide* engineers a hearty invitation to join our Association and lend a helping hand in carrying on the good work we have undertaken. We also thank all those who have so kindly favored us with their patronage, and respectfully call upon all engineers to patronize those firms whose names are found within the pages of this work.

Yours truly,

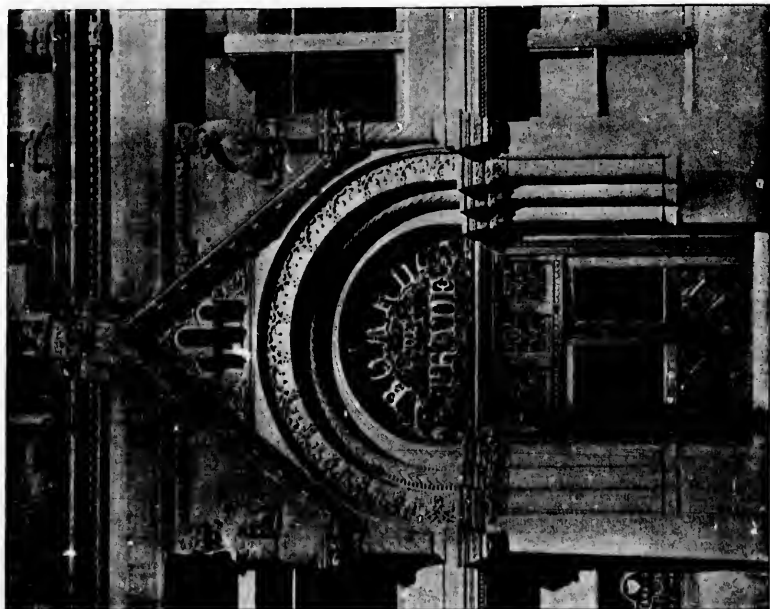
Signed,

GEORGE HEST, Montreal,	<i>President.</i>
W. SUTTON, Toronto,	<i>Vice-President.</i>
JOHN J. YORK, Montreal,	<i>Secretary.</i>
W. G. BLACKROVE, Toronto,	<i>Treasurer.</i>
THOS. KING, Dresden,	<i>Conductor.</i>
F. ROBERT, OTTAWA,	<i>Doorkeeper.</i>

Executive Council C. A. S. E.,

1894.





TORONTO BOARD OF TRADE BUILDING - YONGE STREET ENTRANCE.

WHAT DO YOU KNOW ABOUT STEAM BOILERS?

J. W. GRIER & MUDGE, - Agents,
92 ST. FRANCOIS XAVIER ST.,
MONTREAL.

R. W. W. FRINK, - - Agent,
ST. JOHN, N.B.

GEO. W. JONES, - Agent,
HALIFAX, N.S.

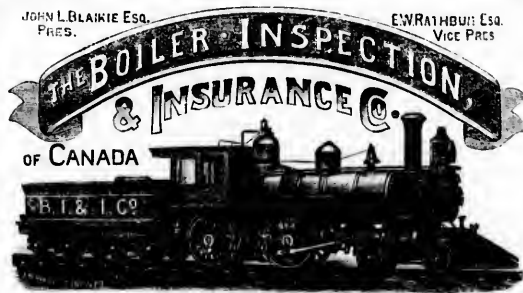
G. M. GUNN & SON - Agents,
LONDON, ONT.

F. W. GATES, Jr., - Agent,
HAMILTON, ONT.

ARTHUR STEWART, - Agent,
WINNIPEG.

JOHN L. BLAIKIE Esq.
PRES.

EW. RATHBURN Esq.
VICE PRES.



CONSULTING ENGINEERS
G. C. ROBB CHIEF ENGINEER
A. FRASER SEC. TRES. HEAD OFFICE TORONTO

WHEN you have any trouble with your STEAM BOILERS or any difficulty with your STEAM ENGINE or HEATING APPARATUS, or Want Advice regarding any matters whatever in connection with your STEAM PLANT, do not hesitate to write to our Chief Engineer and tell what you need. He may be able to help, and his services in such things are always at the command of those insured with us.

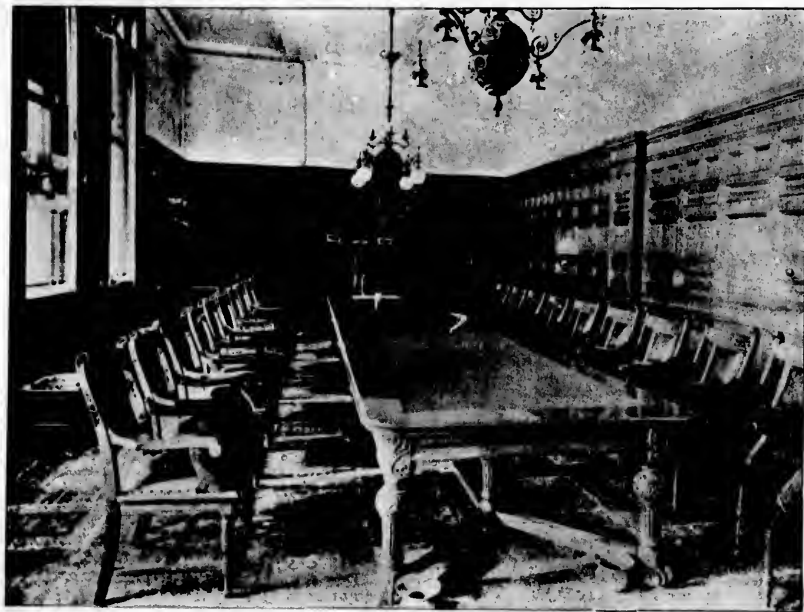
O. E. GRANBERG,
Resident Inspector for Montreal,
96 ST. FRANCOIS XAVIER ST.

A. M. BONNYMAN,
Resident Inspector for Lower Provinces
AMHERST, N.S.

ROBERT STEWART, - Agent,
OTTAWA.

C. H. WILKES, - - Agent,
BRANTFORD.

OWEN MURPHY & NEPHEW, Agents,
QUEBEC.



TORONTO BOARD OF TRADE BUILDING—COUNCIL CHAMBER.

THE BUSHNELL COMPANY LTD.

MONTREAL.



AMERICAN PETROLEUM PRODUCTS.

- WE SELL THE WELL-KNOWN -

**"GLOBE" Cylinder Oils, Dark and Light, "GLOBE" Engine Oils, "GLOBE" Machine Oils,
Electric, Dynamo and Spindle Oils.**

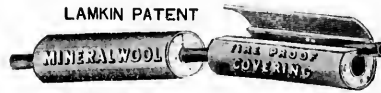
THE STANDARD OIL CO.'s "Renown" Engine Oil Compounds, Lubricants and Greases for all purposes,
Wax (Paraffine) in all melting points for Dairy, Confectionery, Electrical Works, &c., &c., &c.
Oil Tanks, Galvanized Shell, Japanned and highly finished two sizes 30 and 60 Gals., Pratt's Astral Oil,
Homelight Oil, American Illuminating Oils.

Write for Prices and Samples.

THE BUSHNELL CO.'Y LTD.   Board of Trade Building, MONTREAL.
24 Front St. East, TORONTO.



TORONTO BOARD OF TRADE BUILDING COMMITTEE ROOM.



The Canadian Mineral Wool Company, Limited., TORONTO.

HEADQUARTERS FOR

ASBESTOS GOODS,
ENGINE PACKINGS,
ASBESTOS CEMENT.

Patentees and Sole Manufacturers of the

CELEBRATED MINERAL WOOL STEAM PIPE AND BOILER COVERING.

THE BEST NON-CONDUCTOR IS THE CHEAPEST COVERING.

MINERAL WOOL IS THE GREATEST NON-CONDUCTOR KNOWN.



OLD PARLIAMENT BUILDINGS, TORONTO.

THE FENSON ELEVATOR WORKS,

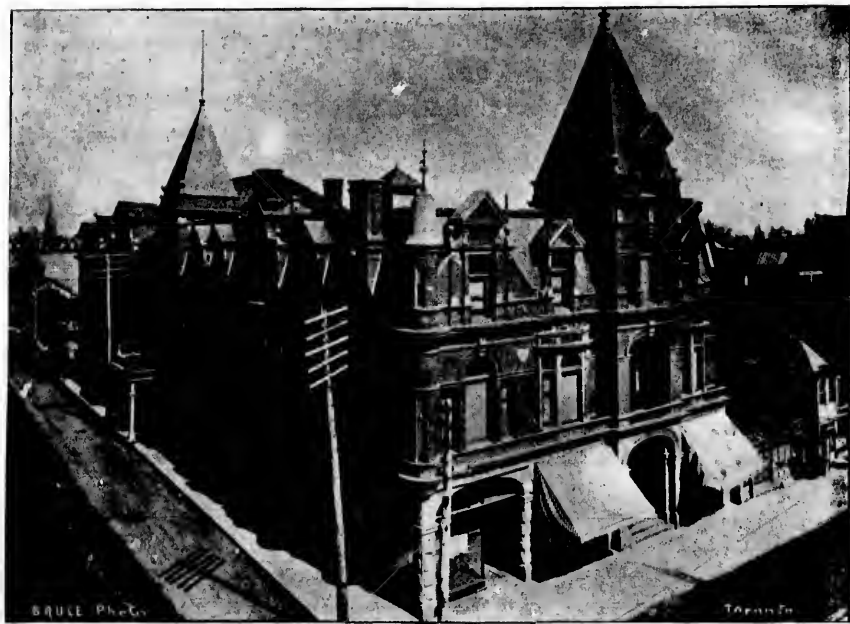
TORONTO, " " ONT.

Manufacturers of

HYDRAULIC ELEVATORS, STEAM AND HAND POWER

ELEVATORS.

— Sole Manufacturers of the Bostwick Folding Gate.



Y. M. C. A., TORONTO.

SAMUEL ROGERS & CO.,

OILS

BRANCH OFFICES AT

MONTREAL.

*

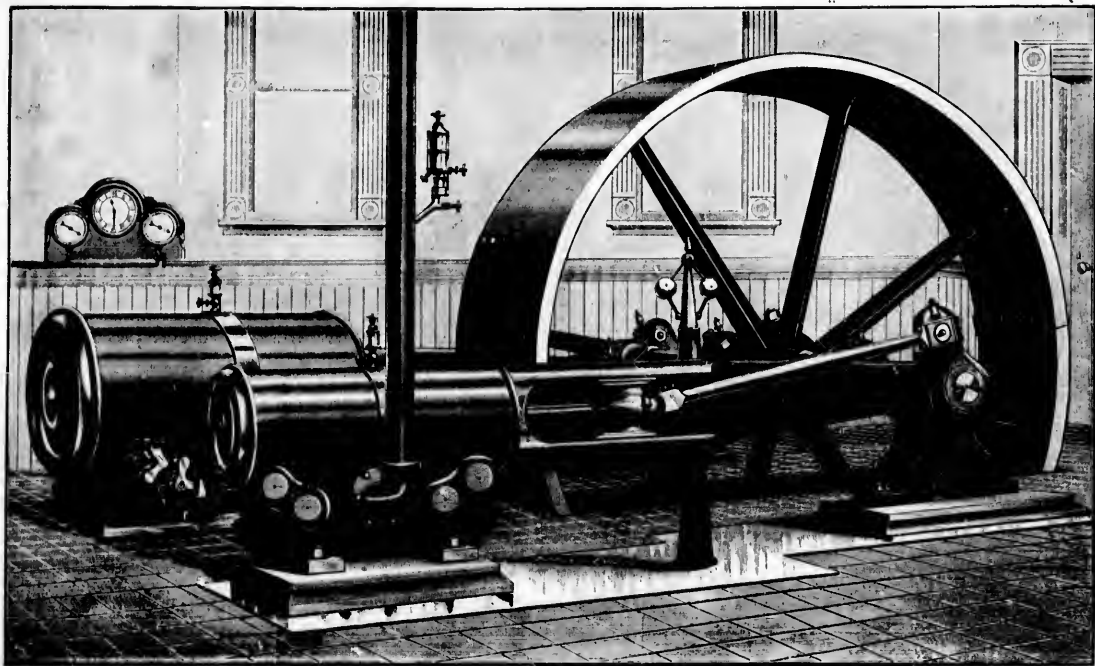
OTTAWA.

*

HAMILTON.

REFINERY AT PETROLIA.

Head Office--30 FRONT STREET EAST, TORONTO.



THE GOLDIE & McCULLOCH CO., LTD.,
Improved * Steam * Engines.
BOILERS

AND ALL APPLIANCES USED IN CONNECTION THEREWITH.

THE WHEELLOCK ENGINE.

Which is specially adapted for Electric Lighting, Electric Street Cars and Power Stations; also Flouring Mills and all
Factories Requiring Economy of Fuel. Mill Gearing and Furnishings of Every Description.

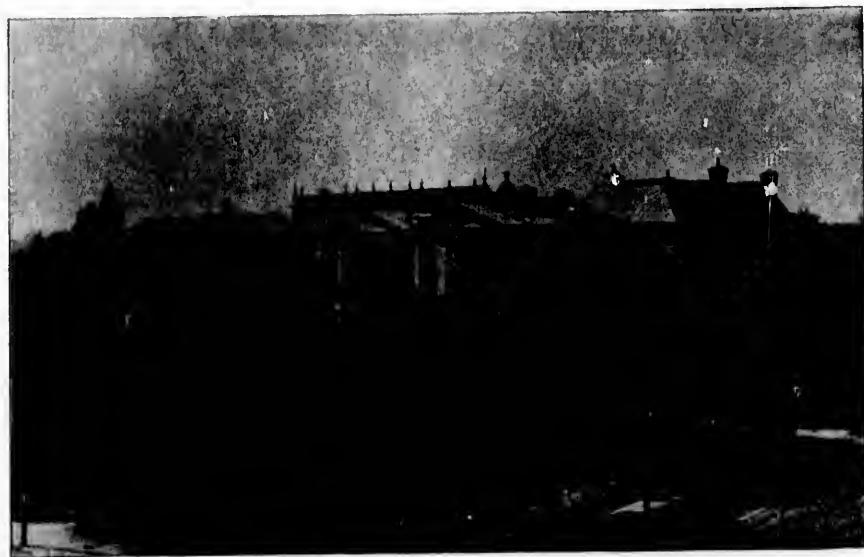
Turbine Wheels, Flouring Mill Machinery, Wool Machinery, Wood Working,

Saw Mill, Shingle and Stave Machinery, Fire and Burglar

Proof Safes, Vault Doors, &c.

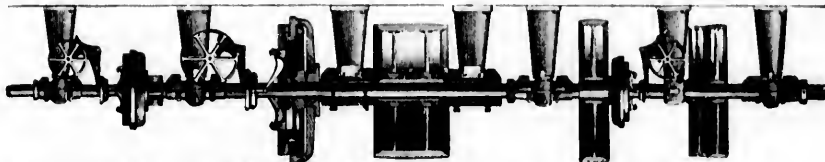
OFFICE AND WORKS - - - GALT, ONT.

The Cut on Opposite Page is a view of our Cross Compound Wheellock Engine.



OSGOODE HALL, TORONTO.

Something
New.



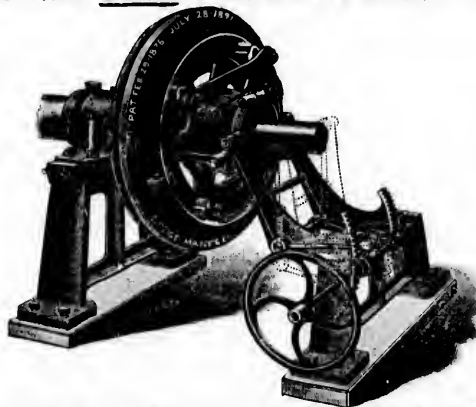
THE DODGE PATENT SPLIT FRICTION PULLEY AND COUPLING.

* *

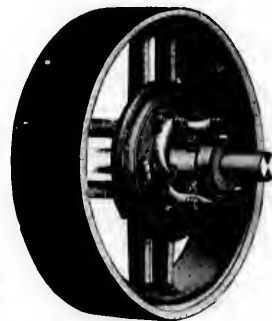


DODGE PATENT.
WOOD SPLIT PULLEY.

* *



DODGE PATENT CLUTCH AND SHIFTER.



DODGE PATENT.
SPLIT CLUTCH PULLEY.

SOLE MANUFACTURERS

SEND FOR NEW ILLUSTRATED CATALOGUE.

DODGE WOOD SPLIT PULLEY Co.,

OFFICE: 68 KING ST. WEST,
TORONTO, ONT.



THE STATUE TO THE HON. SIR JOHN A. MACDONALD, G.C.B. DESIGNED BY MRS. C. B. R. A. MACDONALD, R.C.A. SCULPTOR

SIR JOHN MACDONALD'S MONUMENT, TORONTO.

WE have, for thirty-five years, adhered to one policy in the manufacture and sale of lubricants, regardless of price at which others, in their greed and anxiety for business, might sell,—viz., to produce and supply uniformly the greatest possible value and economy to the consumer for the price charged. And with the care and cost of material put into our goods to produce and maintain this uniform superiority, we are confident that our percentage of profit is less—rather than greater—than is made by those who undersell us in price per gallon, evidence of which lies in the fact that hundreds among the best and most carefully critical at home and abroad, knowing our productions, among whom we may mention with pride many of the largest, finest and fastest fleets of steamers that float the ocean, and others in all departments of manufacture and consumption, have used them steadily for more than fifteen years, save at intervals, during which they have faithfully and determinedly sought to economise on lower priced goods, promised and guaranteed to be the equal of ours, but have gladly returned to us to save their money, machinery and troubles, finding that in our **Anti-Corrosive Cylinder Oils** at \$1.00 per gallon and our **Imperial Engine and General Machinery Oil** at 75 cts. per gallon, there is to any careful user a saving of safely more than 50 per cent. in quantity required to give the most cleanly, cooling

perfection of lubrication, ease and regularity of motion, over any other to be had at the same or a lower price; and thereby an equal saving in power, fuel, destruction of plant, and torments almost innumerable arising from defective lubrication.

The "**ANTI-CORROSIVE**" for steam cylinders or any heavy bearings difficult to keep cool; the "**IMPERIAL**" for all bearings, slides, mill rolls, planer beds, cranks, calenders, dynamos—for which it is famous—and, in fact, all general work outside of cylinders. For all these, it supplants sperm, lard or olive oil, surpassing them all in cleanly, cooling work and endurance, while for dynamo work it is found susceptible of filtration over and over again until all is consumed without deterioration of lubricating substance, while all others we have met with begin to lose perceptibly at the first filtration, and soon become useless for the purpose.

The prices given above are for oils in barrels. If in tin, wood-cased cans, the additional cost will be 10 cts. per gallon, and all who faithfully and fairly test and compare these goods, adopt them regardless of cheap stuff offered for like purpose.

E. H. KELLOGG & Co.

E. H. KELLOGG,
G. W. BARTLETT.

E. H. KELLOGG,
G. W. BARTLETT.

ESTABLISHED 1858.

E. H. KELLOGG & CO.,

NEW YORK, LIVERPOOL, LONDON, BOMBAY

SOLE MANUFACTURERS OF

THE WORLD RENOWNED



AND THE BEST GRADES OF ENGINE, FURDER, DIESEL, PORTLAND, SEWING MACHINE, RAILWAY AND STEAMSHIP LUBRICANTS.

WAREHOUSES:

NOS. 475 AND 477 WATER STREET

HOME OFFICES:

Nos. 243 and 244 South St.,
NEW YORK, U. S. A.

BRANCH HOUSES:

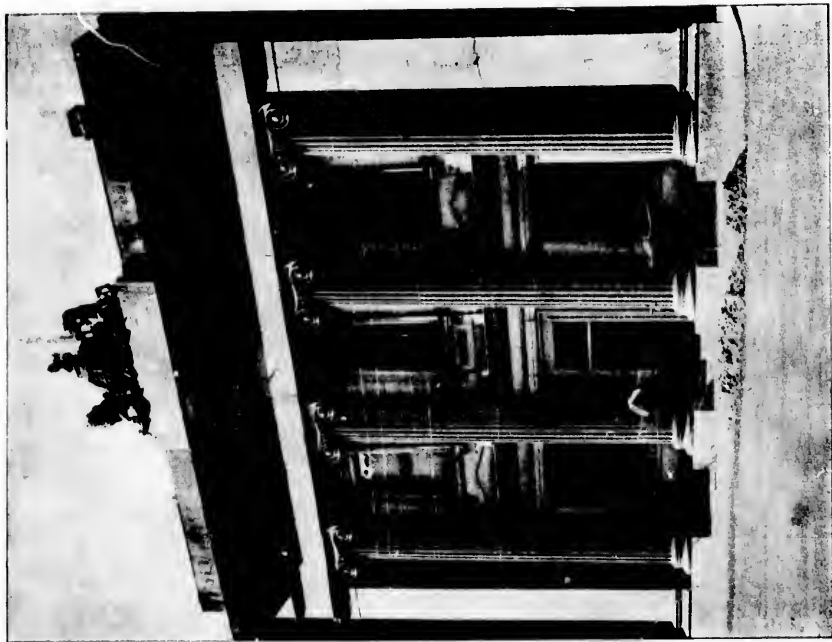
88 RAINFORD COURT, LIVERPOOL, ENGLAND.
158 LEADENHALL STREET, LONDON, E. C., ENGLAND.

BRANCH OFFICES:

Paris, France.	Berlin, Germany.
Havre, France.	Gothenburg, Sweden.
Hamburg, Germany.	Trieste, Austria.
Bremen, Germany.	Christiania, Norway.
Bombay, India.	Calcutta, India.

CABLE ADDRESS,
KELLOGG, NEW YORK.

CABLE ADDRESS,
SANNAVI, LIVERPOOL.



ISLAND REVENUE BUILDING, TORONTO.

REID'S PATENT BENT - RIM - WOOD - SPLIT - PULLEY.

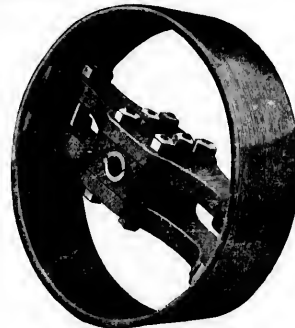
ONE QUARTER TO ONE HALF LIGHTER & STRONGER THAN SEGMENT RIM PULLEYS.

Save Money by Reducing Weight on your Line Shaft. Our Pulley will do this.

NO GLUE in rim like segment rim pulleys to be affected by steam, dampness and moisture. Surface will wear even and not get ridgy like segment pulleys.

◁ WE GUARANTEE SATISFACTION ▷

Send for Catalogue.



PATENTED 12TH DEC., 1892

LOWEST DISCOUNT FOR BEST PULLEY IN THE WORLD.

ADVANTAGES.

NO GLUE in rim like segment pulleys.
No Nails in rim.
No Uneven Surfaces caused by wear.
No Danger of rim flying to pieces from centrifugal force.

Any Pulley found unsatisfactory may be returned

At Our Expense.

Manufactured by

Reid Bros. & Co.,

Telephone.



102 & 106 ADELAIDE ST. WEST, TORONTO.



UNIVERSITY OF TRINITY COLLEGE, TORONTO.

Heintzman & Co.,

• • TORONTO, CAN.

WAREROOMS:—
115 and 117 King St. West.

FACTORY:—
Toronto Junction.



OUR BABY GRAND

HAS no rival among the Pianos of home or foreign manufacture. It is the ideal Piano of the century. The tone of our Baby Grand has a distinctive character of its own, which, while retaining all the essential qualities usually looked for, possesses a degree of richness and refinement that will, upon trial, readily demonstrate why the

"Heintzman & Co. Tone"

has become the standard for musical beauty.



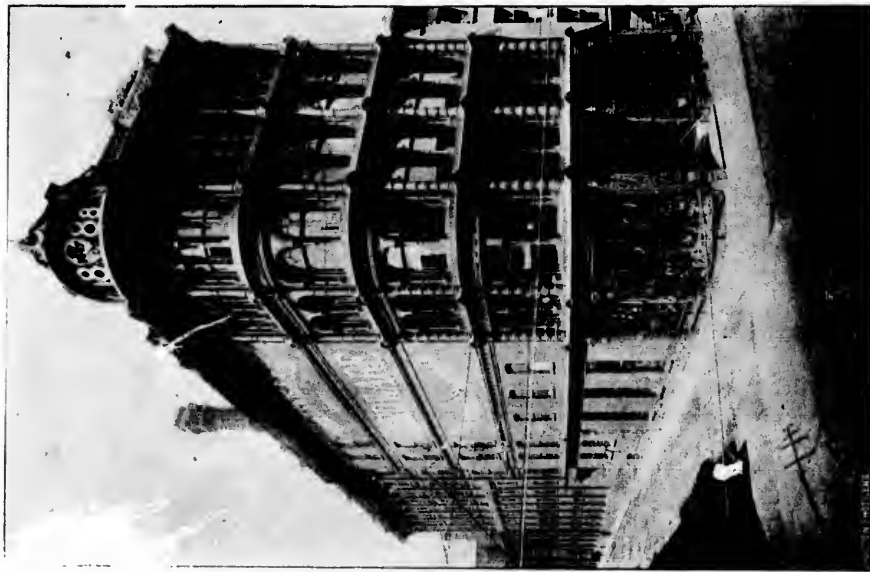
Our Baby Grand Piano.

OUR NEW TRANSPOSING PIANO

A UNIQUE and simple invention. No longer a chimera, but recognized by the best musicians of the day as an accomplished, practical fact. Music played as written may be rendered in any of the various keys desired. All music can be played in the scale of "C" and its relative "A" minor, and rendered in all the various keys or scales as written. Perfectly adapted to all the different systems of music. So simple in construction it cannot possibly get out of order.

11,000 Heintzman & Co. Pianos now in use, and every Purchaser pleased.

HEINTZMAN & CO., Premier Piano Manufacturers, TORONTO.



ENGINEERS' * AND * STEAMFITTERS' SUPPLIES.

Black and
Galvanized

Gas and Water

All kinds

WROUGHT IRON PIPE

BOILER TUBES

CAST IRON PIPE

IRON AND BRASS VALVES

MALLEABLE CAST IRON FITTINGS



Write for Prices

and

Weekly Stock List.

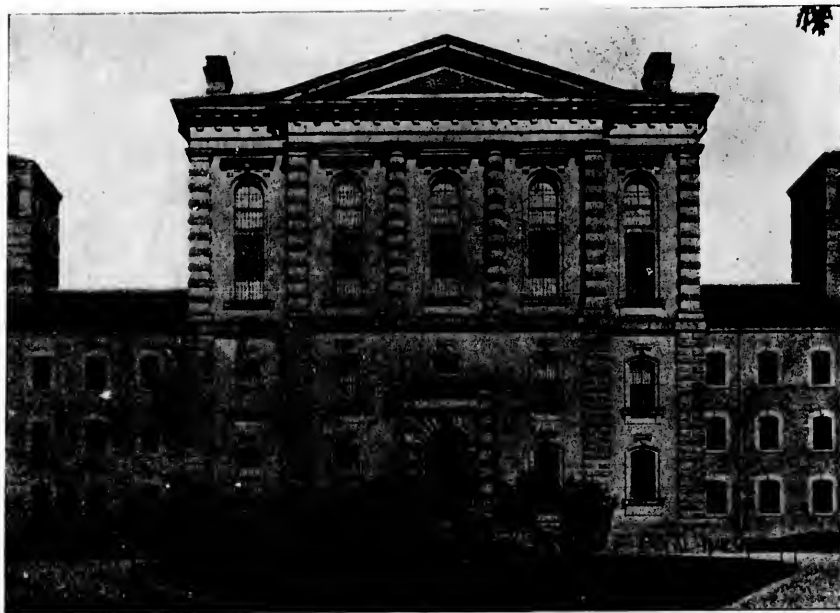
COTTON WASTE, ENGINE PACKINGS, BABBIT METALS, PLUMBAGO, &c.

RICE, LEWIS AND SON,

LIMITED,

WHOLESALE AND
RETAIL.

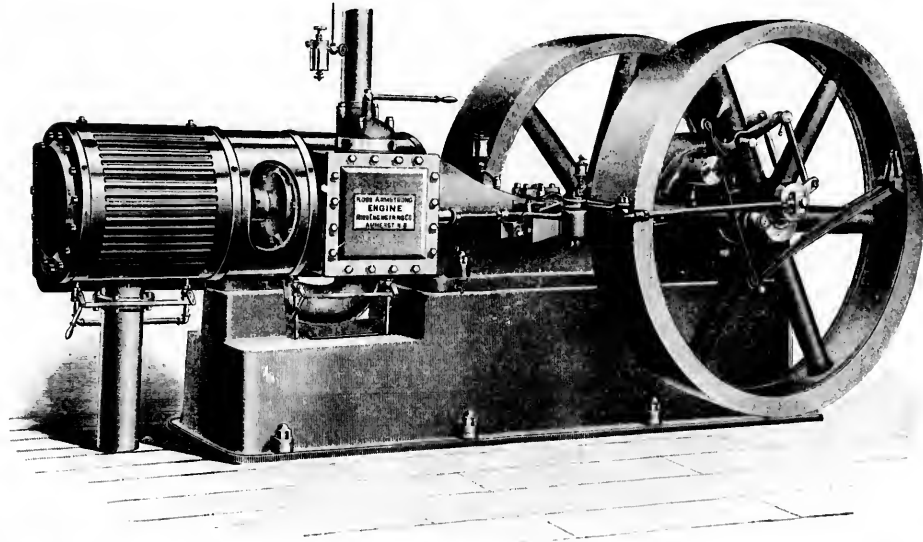
TORONTO, ONT.



TORONTO GAOL.

ROBB-ARMSTRONG AUTOMATIC ENGINES, SIMPLE AND COMPOUND.

ECONOMICAL IN USE OF STEAM AND OIL.

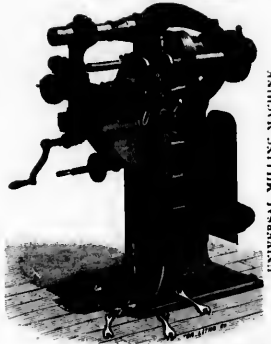


SIMPLEST AND BEST GOVERNOR IN USE.

ROBB ENGINEERING CO. Ltd., Amherst, N.S., Contractors for High Grade Power Plants.



UNION STATION, TORONTO.



UNIVERSAL MILLING MACHINE.

A. R. WILLIAMS.

MANUFACTURER OF AND DEALER IN **MACHINERY & SUPPLIES** OF EVERY DESCRIPTION.

Engines and Boilers, Iron Working Machinery, Wood Working Machinery, Saw Mill Machinery, Shingle Mill Machinery, Veneer & Hoop Machinery, Mining Machinery, &c., &c., &c.

SEND FOR CATALOGUE.

HEAD OFFICE & WORKS: Soho Machine Works, TORONTO. BRANCH OFFICE & WAREHOUSE: 305 St. James Street, MONTREAL.

The CANADA MACHINERY & SUPPLY COMPANY

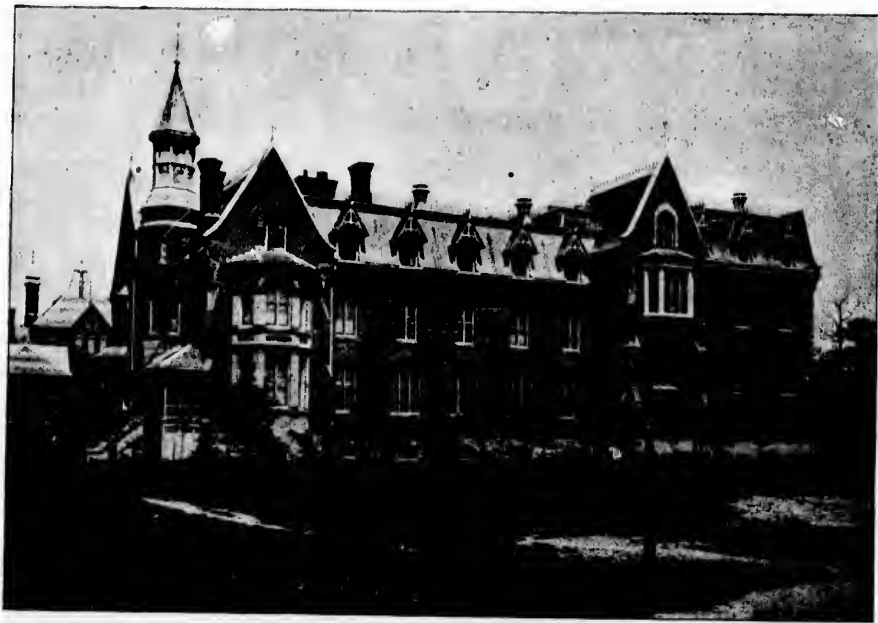
Machinery Brokers,

Engineers

Machinists.



Office and Works, Opposite Market; Warehouse, Cor. Bain and Water Sts., - - BRANTFORD, CANADA.



WYCLIFFE COLLEGE, TORONTO.

W.M. SCLATER & Co.

LIMITED.

MONTREAL.



MAGNESIA SECTIONAL STEAM PIPES. PLASTIC AND BLOCK COVERINGS.

Used by all the principal Steam Users in the Dominion and in all parts of the United States.



SCIENCE INFORMS US THAT IT IS THE BEST NON-CONDUCTOR KNOWN.



Mill, Railway, Steamboat and Engineers' Supplies. The Largest Stock in the Dominion and Best Assorted.

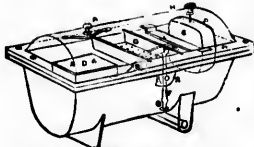
THE ASBESTOS WAREHOUSE, 42, 44 & 46 FOUNDLING ST., Montreal.

P. O. Box 1549.

Telephone 541.



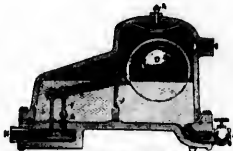
MACMASTER HALL, TORONTO.



Chapman's Self-Regulating Steam Trap.
(Patented April 16th, 1878.)



BACK PRESSURE VALVE.



McDANIEL'S SPECIAL STEAM TRAP.

DOMINION METAL WORKS

ESTABLISHED 1828.

GARTH & CO., - MONTREAL,

Hot Water and Steam Engines.

—MANUFACTURERS AND FURNISHERS—

CAST IRON, STEAM, WATER AND SOIL PIPE FITTINGS, MALLEABLE IRON FITTINGS, BUSHINGS,
PLUGS, ETC., IRON AND BRASS STEAM AND WATER STOP COCKS, IRON AND BRASS
GLOBE WATER VALVES, ETC., STEAM WHISTLES, STEAM PUMPS, JENKINS'
VALVES, COILS, RADIATORS, HOT WATER FURNACES, SANITARY
EARTHWARE AND BATHS.



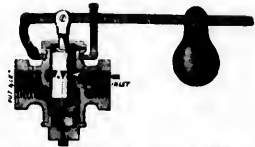
—AGENTS—

PENBERTHY & KORTING'S INJECTORS,
VANDUZIN STEAM JET PUMPS,
BUCKEYE BELL FOUNDRY CO.

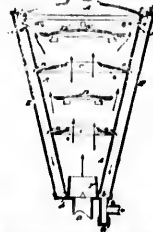


—AGENTS FOR—

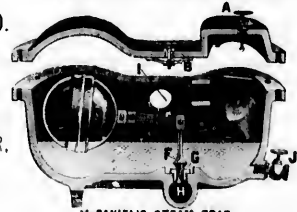
Watson & McDaniel's Steam Users' Specialties, viz.,
CHAPMAN'S STEAM TRAP, WATSON'S PRESSURE REGULATOR,
McDANIEL'S EXHAUST PIPE HEAD,
McDANIEL'S SUCTION FITTING, McDANIEL'S SUCTION TEE
AND RELIEF VALVES.



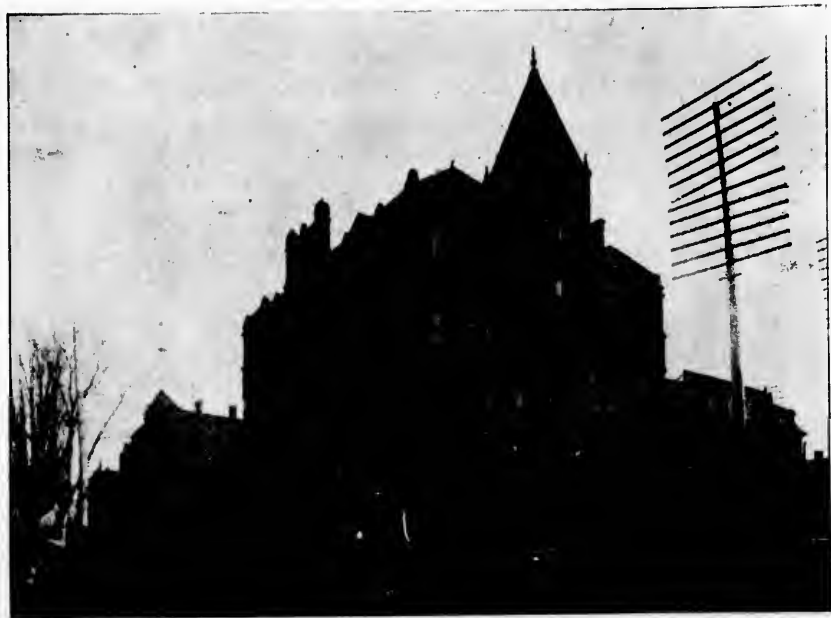
PRESSURE REGULATOR Watson's Patent.
"Reducing High to Low Pressure Steam."



McDANIEL'S PATENT CONDENSER HEAD.



McDANIEL'S STEAM TRAP.



COLLEGE OF PHYSICIANS AND SURGEONS, TORONTO.

5.

James Wilson & Co.,

TELEPHONE,) BELL 639.
) FED. 447.

• IMPORTERS OF •

ENGINEERS' SUPPLIES OF EVERY DESCRIPTION,
OILS - AND - COTTON - WASTE,

Patent Lubricating Greases. • Sheet and Piston Packings.

RAILROAD, STEAMSHIP AND MILL SUPPLIES.

66, 67, 68 & 69 COMMON STREET,

Opposite Black's Bridge, Corner Queen Street,

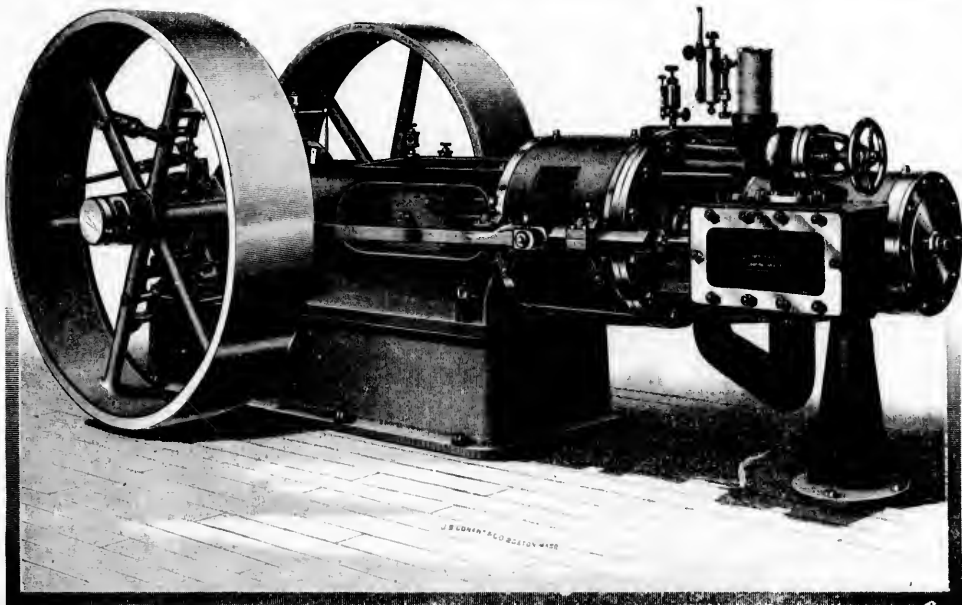
MONTREAL



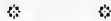
CORNER YONGE AND FRONT STREETS, TORONTO.

COMPOUND AND SIMPLE LEONARD BALL ENGINE.

Beauty of Design. Superior Finish. Economy of Fuel. Perfection of Regulation. By virtue of a new principle in Steam Engineering, the only governor that gives absolutely the same speed under all changes of load or boiler pressure. A balanced flat valve that takes up its own wear by a telescopic movement. It never leaks. Boilers of all kinds; also plain Engines, Steam Pumps, etc.



LEONARD & SONS, - LONDON, Ont.



Corner Common and Nazareth Streets, - MONTREAL.



LAKESIDE HOME FOR CHILDREN, TORONTO.

MECHANICS' FOUNDRY.

BELL TELEPHONE 123.

WM. RODDEN & CO.,

(Successors to Day & DeBlois.)

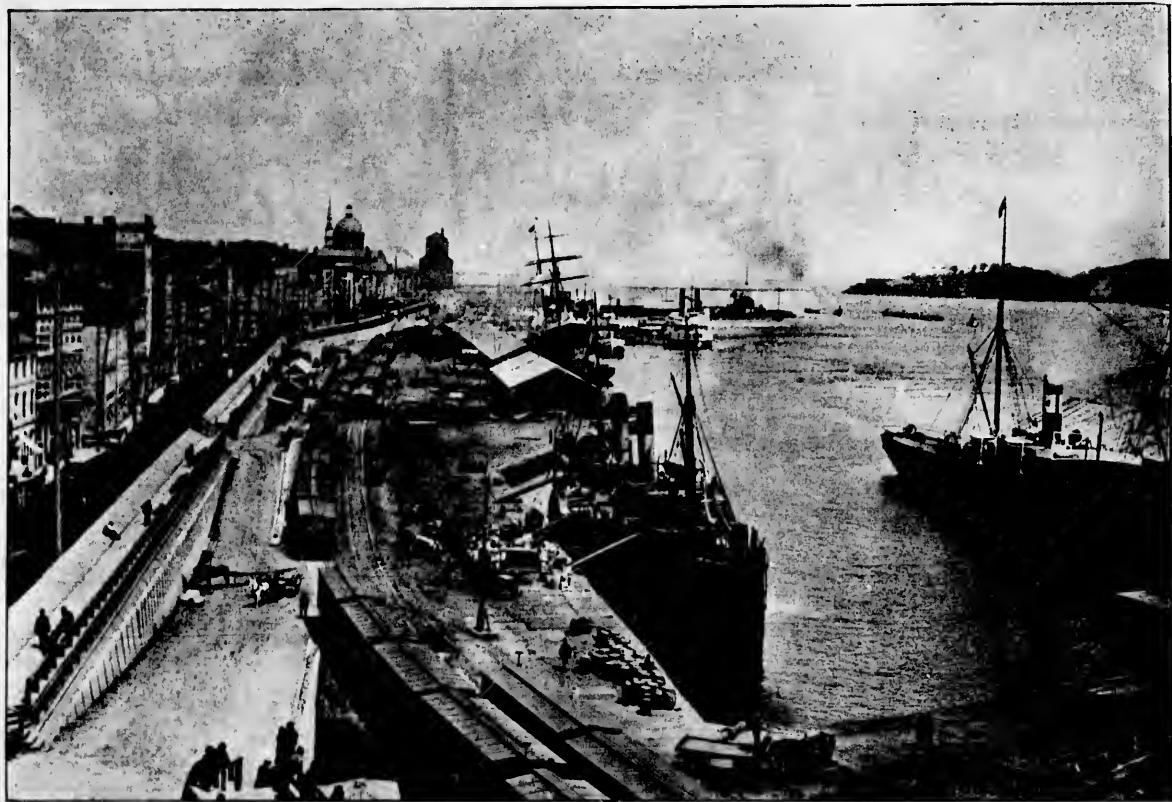
IRONWORKS - - 110 TO 120 ANN STREET,
MONTREAL.

Machinists' and General Castings, Sound, Strong,
and True to Pattern.

ARCHITECTURAL IRONWORK--COLUMNS, RAILINGS, PILASTERS.

HOT WATER BOILERS.

✻ STEAM FITTINGS. ✻ CAST - IRON BATHS. ✻



MONTREAL HARBOUR.

F. Robertson, 

. . . Importer and Dealer in . . .

Anthracite : and : Bituminous : Coal,

— ALSO —

Foundry : and : Furnace : Coke

SPECIALY SELECTED FOR DOMESTIC PURPOSES.



Selling Agent at Montreal for H. P., C. & W. Ry. Co's.

LACKAWANNA - VALLEY - COAL.

— * * * —

Office: 65 McGill Street, . . . MONTREAL.



BOARD OF TRADE BUILDING, MONTREAL.

THE BEST GOODS OBTAINABLE FOR ALL THE PURPOSES IT IS INTENDED TO SERVE IS

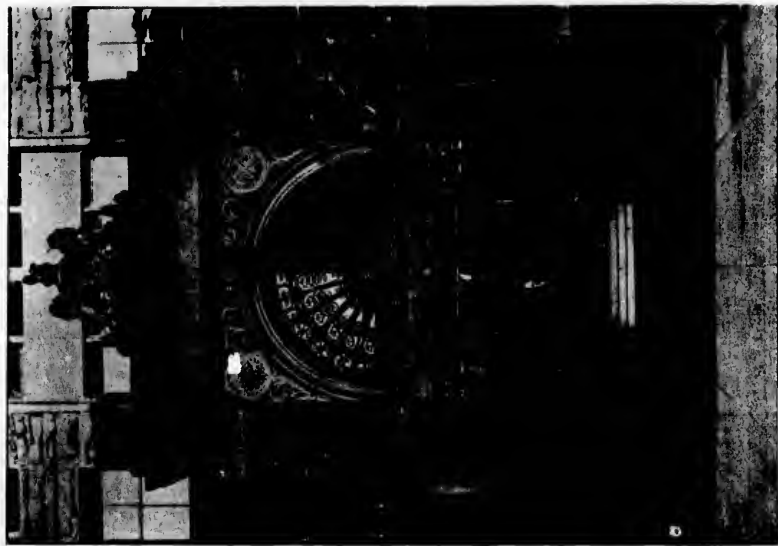


Wholesale and Jobbing Houses all handle it and all the Best Retail and Family Grocers keep it in stock.

MANUFACTURED ONLY BY

W. D. MCLAREN,

583 and 585 ST. PAUL STREET, - MONTREAL.



BOARD OF TRADE BUILDING, MONTREAL - MAIN ENTRANCE.

 **EAGLE**  **FOUNDRY.** 

ESTABLISHED 1820.

OFFICE *

-AND-

* WORKS:

. 84 .

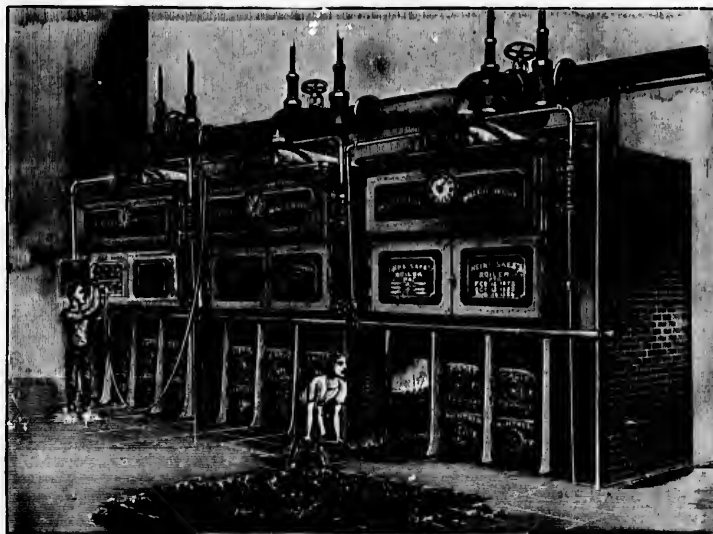
KING ST.

MONTREAL.

*

GEO. BRUSH,

Proprietor.



NEW "HEINE" BOILERS, MONTREAL WATER WORKS.

**BOILERMAKERS,
FOUNDERS,
MACHINISTS.**

SPECIALTIES:
"Heine" Safety Water
Tube Boilers.
Blake "Challenge"
Stone Breakers.
Hydraulic Power and
Hand Elevators.
Patent Shingle and
Bark Mills.

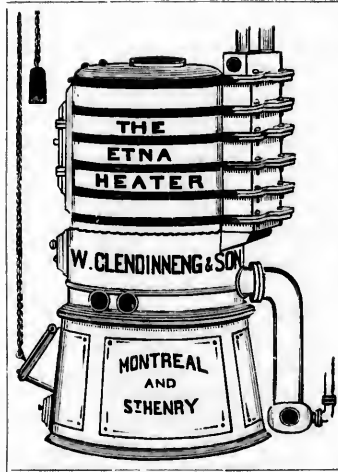


VICTORIA SQUARE, MONTREAL.

THE "Etna" HOT WATER HEATER.

THE "Universal" LINE OF STOVES.

THE "Leader" LINE OF STOVES.



Three of the Leading Lines in Canada today.



Each one Perfect and Guaranteed.



We invite inspection.

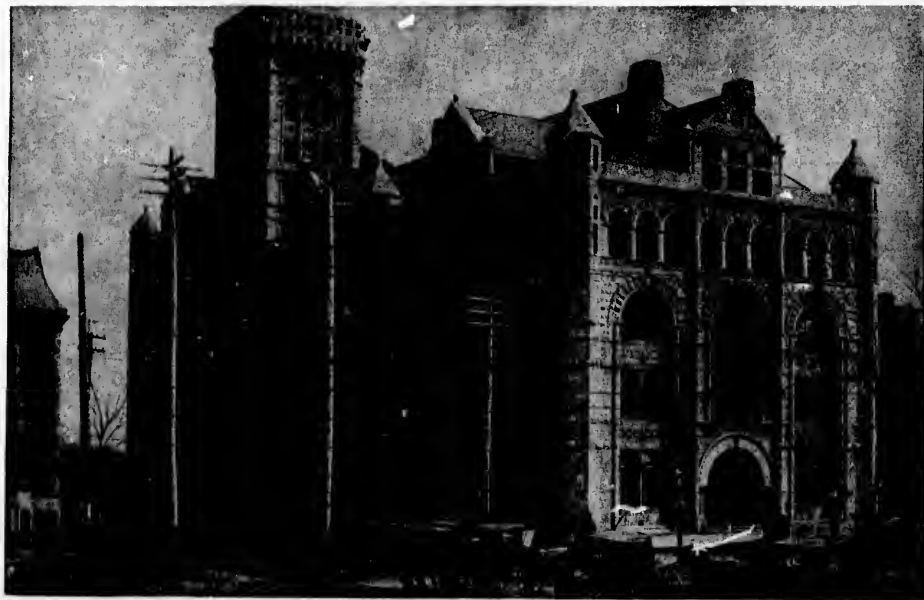


THE WM. CLENDINNENG & SON CO. LTD.,

Montreal

and

St. Henry.



WINDSOR STREET STATION, C. P. R., MONTREAL.

ROBIN & SADLER

Manufacturers of

 OAK TANNED 

LEATHER BELTING

MONTREAL & TORONTO.



FOR
ELECTRICAL LIGHTING,
RAILWAY WORK,
USE ONLY OUR
DYNAMO BELT.

FOR
SAW MILLS
OUR WATERPROOF BELT
WILL GIVE YOU SATISFACTION.
TRY IT.



BONSECOURS MARKET, MONTREAL.

 JOHN McDOUGALL 

◆ Caledonian ◆ Iron ◆ Works ◆

ST. GABRIEL LOCKS,



MONTREAL.

Boilers, Engines, Pumps, Gearing, Hangers, Shafting, Pulleys, Etc.



CITY HALL, KINGSTON.

PACKARD ELECTRIC



TRANSFORMERS.

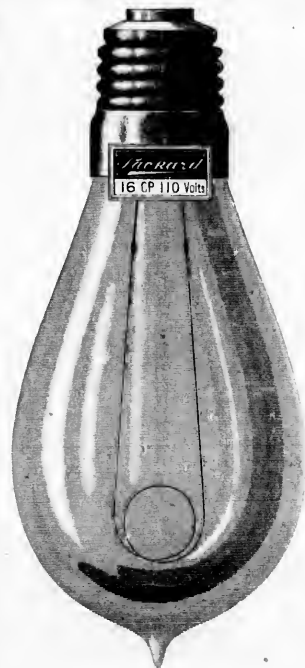
NO SHORT CIRCUITS.

NO "BURN OUTS."

ANY CONVERTER NOT GIVING
ENTIRE SATISFACTION WILL BE
REPLACED FREE OF CHARGE
OR FULL CREDIT ALLOWED.



96 TO 100 KING STREET,



COMPANY, LIMITED.



LAMPS.

TRY OUR HIGH GRADE LAMP AND
YOU WILL USE NO OTHER.

EFFICIENCY *

* BRIGHTNESS

MAINTENANCE OF

CANDLE POWER,

GUARANTEED FOR AN AVERAGE

LIFE OF 800 HOURS.



MONTREAL.



COURT HOUSE, KINGSTON.

ROBERT MITCHELL & CO.

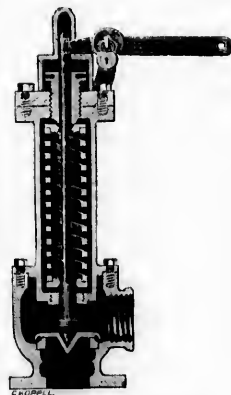
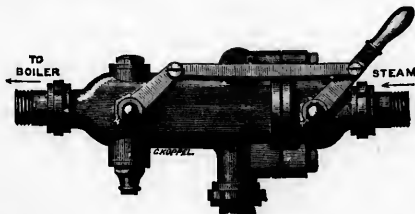
Montreal Brass Works,

MONTREAL.



Office and Stores:
Bleury Street.

factory:
St. Cunegonde.



SPRING SAFETY VALVE.

Manufacturers of
STEAMFITTERS' SUPPLIES.

INJECTORS, EJECTORS, SAFETY VALVES, ETC.





PENITENTIARY, KINGSTON.

A. A. AYER, President,
GILMAN CHENEY, Vice-President

WALTER H. LAURIE, Gen. Manager,
JOHN LAURIE, Treasurer.

LAURIE ENGINE CO.,

ENGINEERS • AND • FOUNDERS

BUILDERS OF

**Corliss and Piston Valve Automatic Engines—Simple, Compound
and Condensing.**

FOR STREET RAILWAYS
FOR 'ELECTRIC SERVICE



FOR ROLLING MILLS
FOR FACTORIES

ST. CATHERINE STREET, EAST,

MONTREAL, CAN.

Established 1871.

Incorporated 1894.



MARTELLO TOWER AT FORT FREDERICK, NEAR KINGSTON.

STEAM PUMPS.

INJECTORS.

Canada Machinery Agency,

W. H. NOLAN, MANAGER,

345 AND 347 ST. JAMES STREET,

MONTREAL.

Iron and Wood-Working Machinery,
Engineers' Supplies.

DODGE WOOD SPLIT PULLEYS--All Sizes in Stock.

—AGENTS FOR THE—

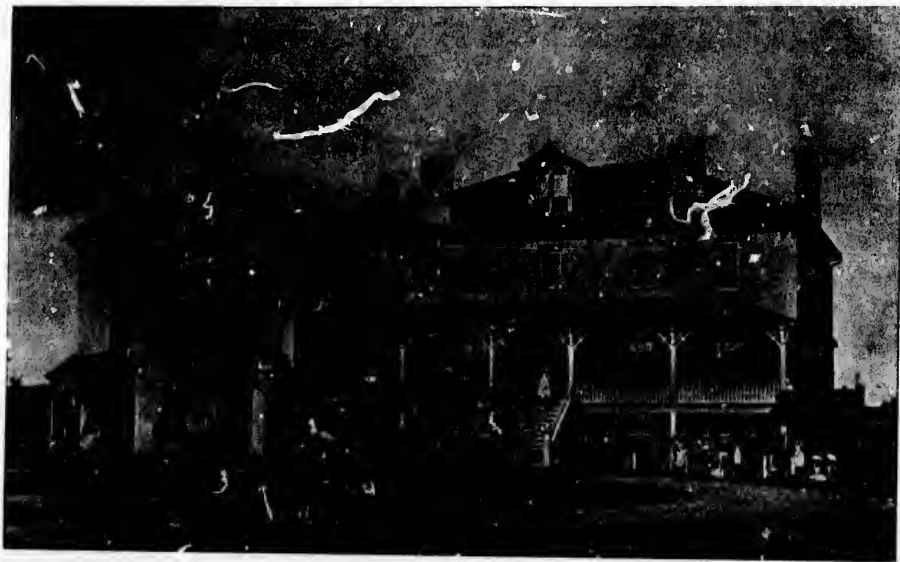
"MONARCH" ECONOMIC BOILERS.

—AND—

Robb-Armstrong Automatic High Speed Engines.

ESTIMATES CHEERFULLY GIVEN.





MOHAWK INSTITUTE, BRANTFORD.

" Grips always motionless when out of grip " Enables adjustment to be made without stopping shaft.

* *

LIMITED SPACE :-

ON ELECTRIC PLANT SHAFTS is the rule. ECONOMISE IT BY USING OUR

GRIP PULLEYS

WITH DOUBLE DRIVERS.

2 Pulleys on one Driver.

*

CUT SHOWS .

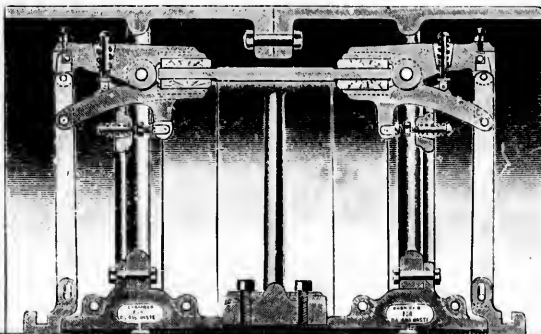
sectional view of

CENTRE DRIVE GRIP PULLEY

Designed for special heavy work having 16 grips, 8 on each side.

Size 70" x 56" fan.

... 1200 Horse Power.



WATEROUS, BRANTFORD, CAN.

STEEL RIM PULLEYS

Very Strong and Light

CAST IRON PULLEYS

SHAFTING

Any Length to 26 feet.

SPECIAL HEAVY

PATTERNS

For

ELECTRIC WORK

In BEARINGS,
FLOOR STANDS,
TIGHTENERS

GRIP

GEARING

Connecting Water-
Wheels to Electric
Plant Shafts.

GET OUR
PRICES.

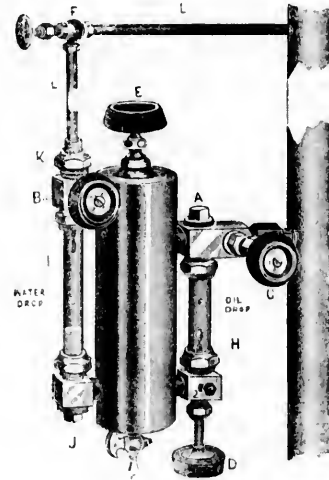
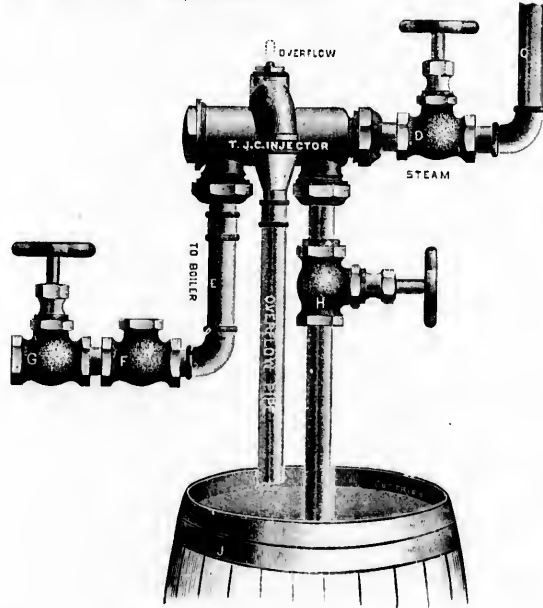
Many in
Successful
Operation.

WATEROUS ENGINE WORKS CO., LTD., Brantford, CANADA.



ST. PETER'S HOME FOR INCUBABLES, HAMILTON.

T. J. C. INJECTOR.



SOLE MANUFACTURERS.

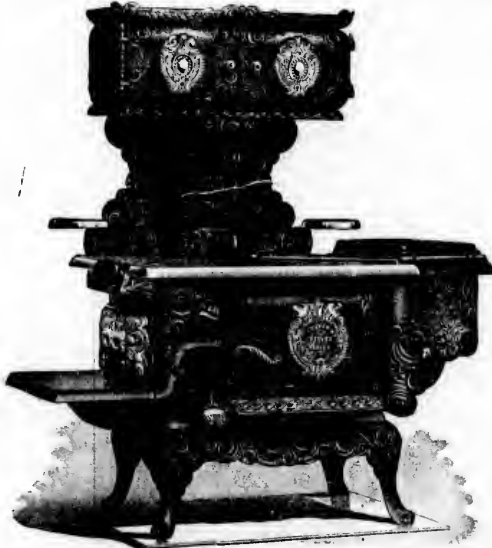
Hamilton Brass Manufacturing Co.,

HAMILTON, ONTARIO.



ENGINEERS' HALL, MONTREAL.

"SOUVENIR" RANGE. ELEGANT IN APPEARANCE. PERFECT IN CONSTRUCTION.



MANUFACTURED ONLY BY

THE GURNEY, TILDEN CO. LTD. SUCCESSORS TO F. & C. GURNEY,
HAMILTON, ONTARIO.

This Range is a Combination of Every Modern Feature
of UTILITY, CONVENIENCE and DURABILITY
known to the Trade.

PROVIDED WITH

● **Aerated Oven** ●

WHICH ENSURES

PROPERLY COOKED FOOD,

AND ECONOMY IN FUEL.

MADE IN SEVERAL SIZES and adapted to the requirements
of large or small families.



It will work satisfactorily where other Stoves or Ranges fail and
every Range is Warranted.

Sold by all Leading Stove Dealers throughout the Dominion.



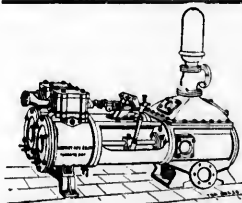
OLD WELAND CANAL, ST. CATHARINES, ONT.

R. MELDRUM

TELEPHONE 742.

JAS. MELDRUM, JR.

MELDRUM BROS.,
Coal Merchants and General Carters,
 Office, Yards and Stables: 32 WELLINGTON STREET,
 MONTREAL.



NORTHEY MFG. CO.,
 Limited.

TORONTO
 ONTARIO.

MANUFACTURERS OF

For General
 Water Supply

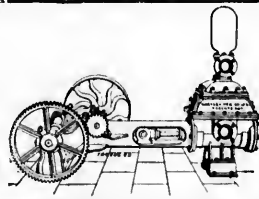
STEAM AND POWER PUMPS

And Fire
 Protection.

Boiler Feed Pumps and Pumps for all duties, Condensers, Etc.

HIGH CLASS PUMPING ENGINES

FOR HIGH DUTY, SUITABLE FOR TOWN AND CITY WATERWORKS.



JENKINS BROS'. VALVES

The Best Made.

We manufacture ONE GRADE OF VALVE ONLY, suitable for high or low pressure steam. The Jenkins' Discs used in these valves are suitable for high or low pressure. We guarantee all valves stamped with Trade Mark.

NEW YORK.

BOSTON.



JENKINS BROS.,

JENKINS' STANDARD PACKING

For Steam or Joint Packing has no superior. It is manufactured in all thicknesses. It is not loaded to increase weight. DOES NOT ROT OR BURN OUT. Every sheet is stamped with Trade Mark. JOINTS IN USE MADE TWENTY YEARS AGO.

PHILADELPHIA. CHICAGO.



VIEW OF PARIS, ONT.

J. C. McLAUGHLIN

H. S. AUBREYSON.

TORONTO : ELECTRIC : MOTOR : CO.

MANUFACTURERS OF

MOTORS & DYNAMOS

FOR ALL PURPOSES. WIRING, ADVERTISING & NOVELTY LIGHTING.

Repairing of all Kinds Promptly Attended to. Prices Reasonable.

Your Patronage Solicited.

107 ADELAIDE STREET WEST, TORONTO, ONTARIO.

TELEPHONE 1254.

OUR CHAMPION GOLD MEDAL

CYLINDER

ENGINE

DYNAMO

MACHINE

**O
I
L
S**

BOILER COMPOUND

AND

ALL KINDS OF

ENGINE PACKINGS

ARE USED BY ALL THE LEADING MANUFACTURERS.

McCOLL BROS. & CO., - - TORONTO.

Complete Electrical Equipments * *

For

*** * Lighting and Power Purposes.**

CENTRAL STATIONS. ISOLATED PLANTS.
ARC AND INCANDESCENT.

ARC LAMPS FOR ARC OR INCANDESCENT CIRCUITS.
INCANDESCENT LAMPS. ELECTRIC WIRING SUPPLIES.

STREET RAILWAYS. GENERATORS, MOTORS AND
RAILWAY SUPPLIES.

STATIONARY MOTORS.

Electric Mining Apparatus. Locomotives, Drills, Hoists,
Blowers, Etc.

TRANSMISSION OF POWER.

The Only Practical System in Operation.

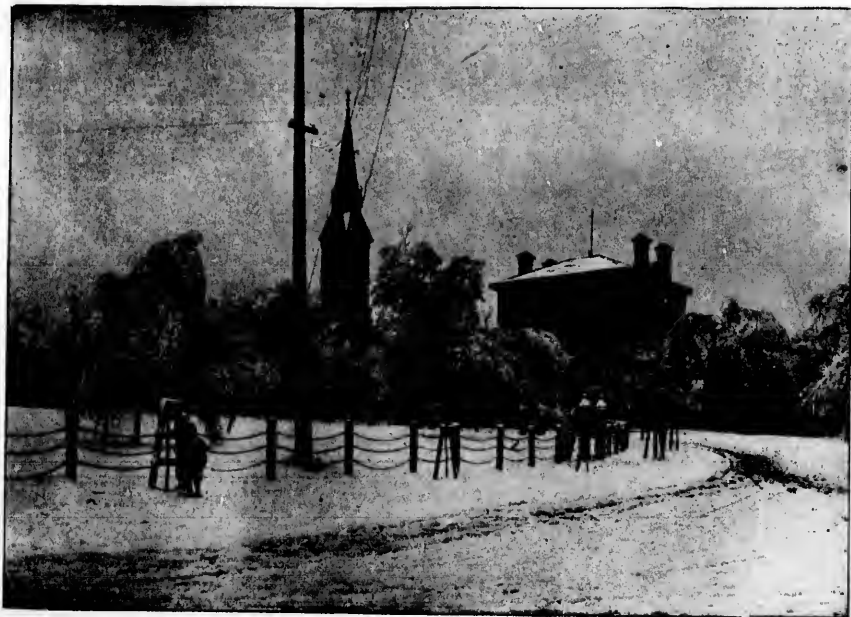
THREE-PHASE GENERATORS. THREE-PHASE MOTORS.

Write for Catalogues and Estimates

CANADIAN GENERAL ELECTRIC CO., LTD.,

TORONTO, ONT.

ALL APPARATUS MANUFACTURED AT PETERBOROUGH, ONT.

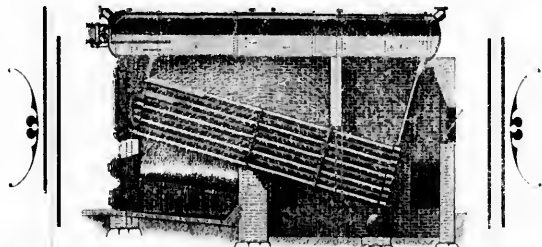


A WINTER SCENE IN BROCKVILLE.

THE BABCOCK & WILCOX

Water • Tube • Steam • Boiler

IS NOW BUILT IN CANADA.



Suitable for All Purposes - Mills, Electric Lighting
and Railways, Heating, Etc.

OVER 1,000,000 HORSE POWER IN USE

Send for our book, STEAM—Free on application. Full information and
Estimates furnished.

HEAD OFFICE:

415 Board of Trade Building, MONTREAL.

E. C. FRENCH, : General Agent for Canada.

BRANCH OFFICE:

DESERONTO, ONTARIO.

ALEX. BREMNER,
IMPORTER.

BURNING AND LUBRICATING **OILS.**



DRAIN PIPES.

Sewer Bottoms,
Farm Tiles,
Chimney Vents.

FIRE BRICKS.

Fire Clay,
Kaolin.

CEMENTS:

Portland,
Roman,
Canada,
Keen's (fine and coarse),
Robinson's (fine and coarse).

Calced Plaster,
Whiteing,
Mortar, Stains (all colors)
Red Oxide paint.

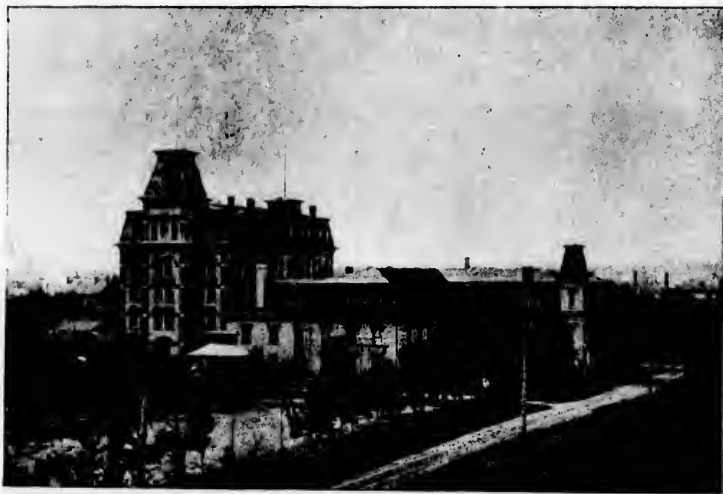
WHEELBARROWS,

Mortar and Brick Hods,
Hand-Barrows,
Derricks,

Ladders,
Snow Shovels,
Scrapers, &c.

TELEPHONE 358

50 Bleury Street, MONTREAL.



ROMAN CATHOLIC COLLEGE, BERLIN, ONT.

MERCHANTS TEL. NO. 550. BELL TELEPHONE 8025.

THE EDWARD CAVANAGH CO.

MANUFACTURERS AND IMPORTERS

OF OILS, PAINTS, OILS, COALS, HARDWARE, ETC.

(SHELF & HEAVY)

2547 TO 2553 NOTRE DAME ST. W. COR SEIGNEURS ST. MONTREAL.

WORLD BEATER !

Telephone
No. 2006.

SHULTZ & SWARTZ,
GERMANY.

Friction : Belt : Dressing

Guaranteed to increase power 25 per cent. Used by all the large manufacturers and electric light plants in Europe. One application will convince you that this is the greatest on earth. Made up in bars, from one to five pounds each.

25 Cents per Lb.

Write for Samples.

CASSIDY, BONNER & CO.,

Leather Belting Manufacturers, * Montreal.

Sole Agents for the Dominion.

JAMES LESLIE,

Manufacturer of

ENGLISH OAK TANNED **Leather Belting,**

LACE LEATHER, &C.

COTTON & WOOLLEN MILL SUPPLIES.

No. 428 St. Paul St., - - MONTREAL.

Miller Bros. & Toms,

Machinists • Millwrights • and • Engineers.

Makers of

— SAFETY ELEVATORS —

AND GENERAL MACHINE WORK.

King Street, / Montreal.



LUNATIC ASYLUM, LONDON, ONT.

**ANDREW BAILE,
COAL MERCHANT,
69 MCGILL STREET,
MONTREAL.**

Importer and Dealer in all kinds of
COAL, COKE, FIRE BRICKS, *
* FIRE CLAY, PIG IRON, &C.

Bell Telephone No. 521.

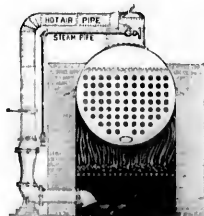
**P. McCRORY,
IMPORTER AND DEALER IN
ANTHRACITE AND BITUMINOUS COALS,
93 WILLIAM STREET, Cor. DUKE STREET,
MONTREAL.**

TELEPHONE No. 1005.

YARD No.2 BASIN CANAL

EARLE'S

**STEAM and AIR INJECTORS,
EXHAUSTERS, ETC.**



For burning hard and soft coal screening, run
mine and lamp coal under steam boilers, exhausting
air and vapors from buildings, ventilating ships,
mines, &c.

Highest Medal and Diplomas given
at the World's Columbian Exposition,
Chicago, 1893.

The BEST BLOWER in the MARKET for STEAM BOILERS

SEND FOR ILLUSTRATED CATALOGUE TO

**S. R. EARLE,
BELLEVILLE, - - - - - CNT.**

**FRANK GORMLEY,
* Manufacturers' Agent, *
ROOM 32 IMPERIAL BUILDING, 107 ST. JAMES ST.,
MONTREAL,**

IMPORTER AND DEALER IN
Standard American Lubricating Oils, Boiler Com-
pound and Mill Supplies, Gas Fixtures,
Machinery, &c., Iron Foun-
tains, &c.

AGENT FOR ASBESTOS STEAM SAVING AND FIRE PROOF MATERIALS

TELEPHONE 2008



FORT GARRY, WINNIPEG.

Telephone 885.
OTTAWA BOILER AND BRIDGE WORKS,
478-480-482 | OTTAWA | 476-478-480
MARIA STREET. | GLOUCESTER ST.

W. J. CAMPBELL & Co.,

MANUFACTURERS OF
MARINE & STATIONARY BOILERS, TANKS,
GIRDERS AND ROOFING
AND EVERY DESCRIPTION OF WROUGHT IRON WORK.

MILL WORK A SPECIALTY.

*N.B.—Every Attention given to Repairs by
Experienced Workmen*

R. ROBERTSON,
BUILDER AND CONTRACTOR.
JOBGING PROMPTLY ATTENDED TO.

BRICK LAYING. BOILER SETTING. REPAIRING. &c. A SPECIALTY.

Building Material of Every Description Always on Hand.

—OFFICE : AND : YARD—

82 SCHOLLARD ST., TORONTO.

Comet Boiler Compound.

THE MOST THOROUGH, SAFEST AND CHEAPEST BOILER
CLEANSER IN THE MARKET.

REASONS FOR USING.

It saves the Boiler. It is the most perfect dissolvent of lime sediment, and keeps the Boiler clean; therefore it saves fuel; it prevents foaming; it reduces to a minimum the possibility of explosion; it saves labor, and it is unequalled.

DIRECTIONS FOR USING.

Put in one gallon EVERY WEEK for fifty horse-power boiler. If the boiler and tubes are extra heavily coated with scale or sediment, add a little extra. Repeat the operation until the scale becomes rotten and falls off.

THE BEST TIME TO ADD COMPOUND IS THE LAST THING ON SATURDAY NIGHT, BEFORE CLOSING DOWN, OR HALF OF ABOVE QUANTITY TWICE A WEEK.

It will not injure Boilers, as it contains no petroleum or mineral acids of any kind.

MANUFACTURED BY

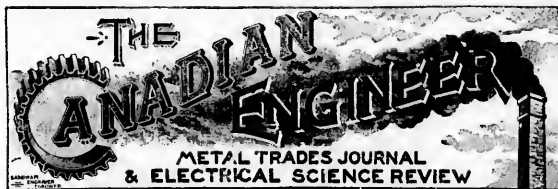
COMET COMPOUND COMPANY,
GUELPH, ONT.

R. S. WILLIAMSON, - - Manager.

EVERY BARREL WARRANTED TO GIVE SATISFACTION. PUT UP IN BBL. AND HALF BBL.



A PARTY OF SNOWSHOERS AT RIDEAU HALL.



82 CHURCH STREET, TORONTO. OFFICES. FRASER BUILDING, MONTREAL.
E. B. BIGGAR, Publisher.
R. R. SAMUEL, Business Manager.

TORONTO TEL. 1392 THE LEADING MONTREAL TEL. 2589
Advertising Medium for reaching the Mechanical, Electrical, Mining, Marine, Locomotive,
Stationary and Auxiliary Engineers, the Manufacturer, the Contractor and the
Merchant in the Metal Trades.

The Canadian Engineer has been greatly enlarged and improved, being now nearly twice the
size of last year.

PUBLISHED MONTHLY, SIMULTANEOUSLY IN MONTREAL AND TORONTO.
Subscription \$1.00 a year. Rates on application.

W. J. ELLARD,

30 GEORGE STREET, OTTAWA, ONT.

Founder of Heavy and Ornamental Castings,

MACHINIST.

BLACKSMITH.

PATTERNMAKER.

Contractor for All Kinds of Machinery and Mechanical Works.

Constitution of the . . .

Canadian Association of Stationary Engineers.

PREAMBLE.

This Association shall at no time be used for the furtherance of strikes, or any way interfering between its members and their employers in regard to wages, recognizing the identity of interests between employer and employee, not countenancing any project or enterprise that will interfere with perfect harmony between them; neither shall it be used in any manner for political or religious purposes.

CHARLES GURD & CO.,

Factory from 39 to 45 JURORS STREET, MONTREAL.

Gold, Silver and Bronze Medals, also 11 Diplomas awarded us at London, England, Dominion and Provincial Exhibitions, for Superior Excellence in Manufactures of Belfast Ginger Ale, Soda Water, Apple Nectar, Hop and Malt Tonic, Etc.

CROSBY Steam Gage & Valve Co.

Sole Licensees for the

BRANDEN PUMP VALVE.

Made of Rubber, with wire coil insertion.
One Branden Valve will outlast three plain valves

Sole Proprietors and Manufacturers of

CROSBY Pop Safety Valves, Water Relief Valves, Improved Steam Gages, Steam Engine Indicators Gage Testers, Original Single Bell Chime Whistles and many other

STANDARD STEAM SPECIALTIES.

Main Office and Works, **BOSTON, MASS., U.S.A.**

Branches: **NEW YORK, CHICAGO and LONDON, Eng.**

Gold Medal, Paris 1889. Ten Highest Awards Chicago, Ill.





PARLIAMENT BUILDINGS, OTTAWA.

E. C. MOUNT & CO.

PLUMBERS,

GAS AND STEAMFITTERS,

TINSMITHS AND ROOFERS.

We Make a Specialty of

Lead Burning, Hot-Water Heating, Remodelling Defective
Plumbing Work, Etc.

ADVICE & ESTIMATES CHEERFULLY GIVEN.

We also have an Electrical Department under the firm
name of MOUNT BROS. where we manufacture

Bells, Telephones, Annunciators, Watchmen's Clocks, Batteries,
Push Buttons of All Kinds,

And a General Line of Electrical Goods.

Estimates on Application for Electric Light Wiring on any of the above.

Address: 766 CRAIG ST.

TELEPHONES:

Office, 1265.

Branch and Residence, 3087.

BRANCH:

31 Cote St. Anloine Road.

♦ ♦

THE STANDARD LUBRICATING CO.,

MANUFACTURERS OF

Graphite Lubricating Compounds and Standard Cup Greases.

GRAPHITE CAR COMPOUND

GRAPHITE COOLER COMPOUND

GRAPHITE DYNAMO COMPOUND

GRAPHITE MASON AND CART GREASE

GRAPHITE ADHESIVE GREASE

For wire ropes, chains and dredges and all plant working on or under water.

STANDARD COOLER COMPOUND

STANDARD CUP GREASES, Nos. 1, 2, 3, 4

QUALITY GUARANTEED. SAMPLES AND PRICES ON APPLICATION.

34 Prince Street,

MONTREAL.

L. Cohen & Son,

COALS: SCOTCH
CAPE BRETON
STEAM COAL
AMERICAN AND WELSH
ANTHRACITE & SMITH'S COAL

ANTHRACITE & BITUMINOUS

FOUNDRY SUPPLIES
LEIGH COAL
MOULDING SAND
PLUMBING
STOVE POLISH ETC.



Dry Cut Wood AND Charcoal.

36 PRINCE STREET.

MONTREAL.

TELEPHONE 814



GOVERNMENT BUILDINGS, OTTAWA. EASTERN DEPT. BLOCK.

TROY LAUNDRY MACHINERY CO.,

— LIMITED. —

648 & 650 Fulton St., Troy, N.Y., U.S.A.

Chicago. + New York. + San Francisco. + London, Eng.

MANUFACTURERS OF

LAUNDRY MACHINERY.

ESPECIALLY FOR INSTITUTIONAL WORK.

HYDRAULIC WASHERS,
HYDRO-EXTRACTORS, STEAM MANGLES,
DRY ROOMS,
STARCHERS, IRONERS, &C., &C.

Plans furnished upon application without cost.

SEND FOR OUR COLUMBIAN EDITION CATALOGUE. 1893.

ALEX. SPITTAL & CO.,

Importers and Dealers in

ANTHRACITE AND BITUMINOUS

COAL

American and English Smiths'
FOUNDRY COKE.

Coke for domestic use in same sizes as hard coal.

SOLE AGENTS FOR THE

Celebrated Pittston Coal.

Office: 161 Sparks Street,

Telephone 971.

Ottawa.



GOVERNMENT BUILDINGS, OTTAWA. WESTERN DEPT. BLOCK.

ALEX. FLECK, JR.
Vulcan Iron Works
OTTAWA.

Mill, Mining Machinery, Shafting, Gearing, Hangers, Etc.

STEAM ENGINE AND BOILER BUILDERS.

IRON WORK, COLUMNS, GIRDERS AND ORNAMENTAL WORK.

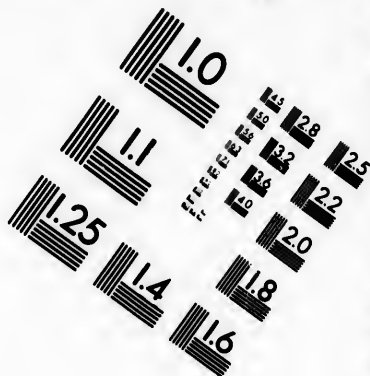
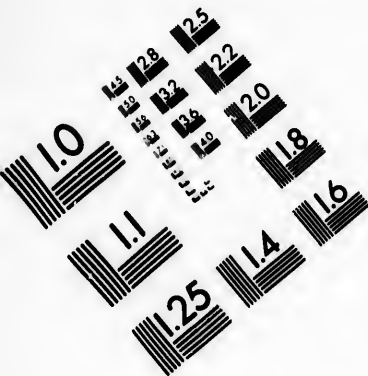
CHILLED CAR WHEELS.

CASTINGS OF ALL DESCRIPTIONS IN IRON AND BRASS.

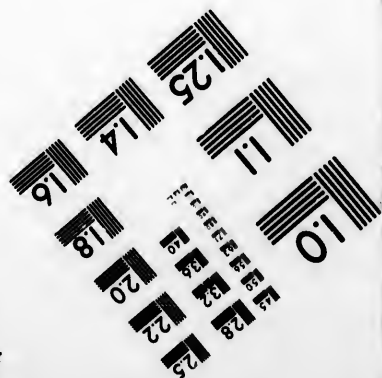
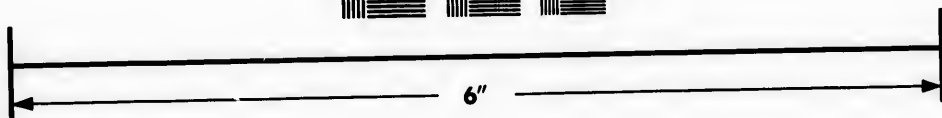
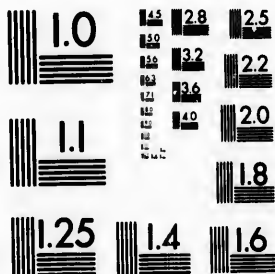
FORGING OF EVERY DESCRIPTION.



REPAIRS PROMPTLY EXECUTED.



**IMAGE EVALUATION
TEST TARGET (MT-3)**

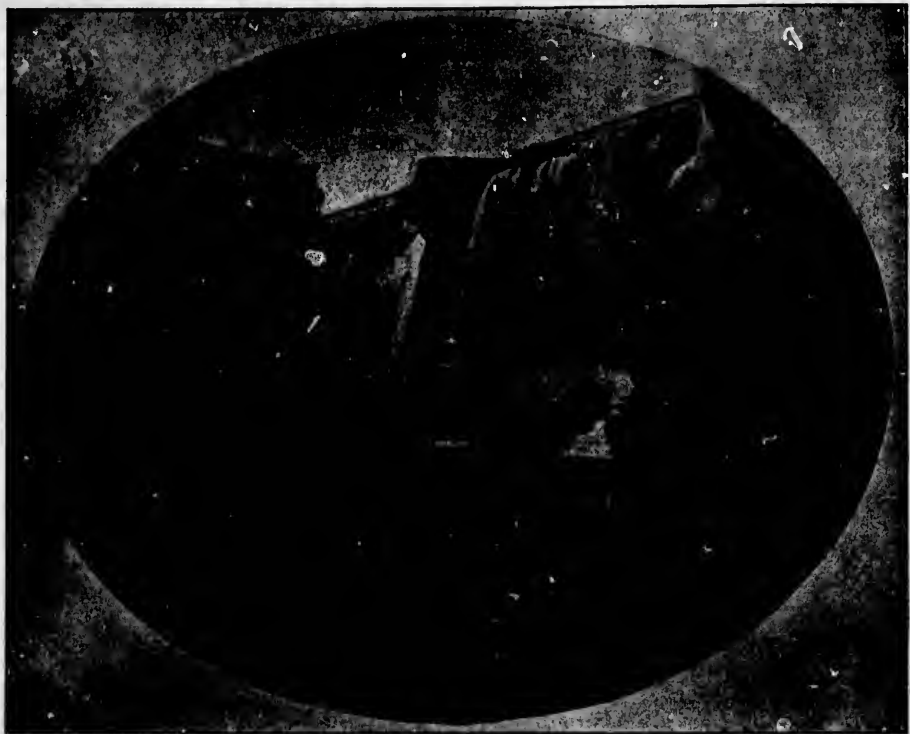


**Photographic
Sciences
Corporation**

23 WEST MAIN STREET
WEBSTER, N.Y. 14580
(716) 872-4503

2.5
3.0
3.6
4.0
4.5
5.0
5.6
6.3
7.1
8.0
9.0
10.0
11.2
12.5
14.0
16.0
18.0
20.0
22.5
25.0
28.0
31.5
36.0
40.0
45.0
50.0
56.0
63.0
71.0
80.0
90.0
100.0

10
11
12.5
14
16
18
20
22.5
25
28
31.5
36
40
45
50
56
63
71
80
90
100



RIDEAU FALLS IN SUMMER.

Geo. May & Sons,

74 RIDEAU STREET,
OTTAWA, ONT.

Standard Oak Tanned Leather
Belting.

AGENTS FOR

BOSTON RUBBER BELTING CO.,
BOSTON, MASS.



AND DEALER IN
STEEL, IRON, COALS, ROPE CHAINS, &c., BUILDERS' AND
GENERAL SHEET METALWARE, GLASS, PAINTS,
OILS AND PUTTY

**GENERAL
HARDWARE**

THOS. BIRKETT, 113 & 115 Rideau Street, OTTAWA.

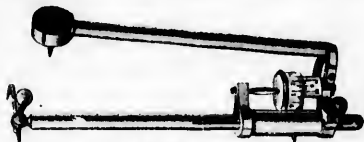


RIDEAU FALLS IN WINTER.

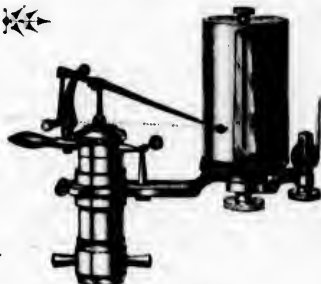
❖ INDICATORS ! ❖



\$40.00



\$15.00



\$40.00

If your curiosity is aroused send for our Catalogue. It describes the perfect Robertson-Thompson, and Improved Straight Line Indicators, Planimeters, Reducing Wheels, Three-way Cocks, and is chuck full of information.

HINE & ROBERTSON Co., 68 Cortlandt St., NEW YORK.

You Can Not Get the Best Results from your Boiler and Engine Without Using the Best Appliances.



80,000 IN USE.

PENBERTHY AUTOMATIC INJECTOR.

Every Engineer who tries it says at once

IT IS UNEQUALLED AS A BOILER FEEDER.

STARTS LOWER,
WORKS HIGHER,
LIFTS FARTHER,
HANDLES HOTTER WATER

Than any other Automatic Injector.

SEND FOR OUR CATALOGUE OF STEAM SPECIALTIES.
PENBERTHY INJECTOR Co., DETROIT, MICH.

Prevent your Crank Pin from heating, by oiling it with the

PENBERTHY SAFETY AUTOMATIC DOUBLE FEED CRANK PIN OILER.

It is A UNIVERSAL FAVORITE.

Two distinct and separate feeds: therefore two valves (other caps have only one) against feed becoming clogged.

FINEST REGULATION—It is Oil is Money.
LEAST TROUBLE.

AUTOMATIC—Once set, requires no more attention, except to fill.

SEND FOR OUR CATALOGUE OF STEAM SPECIALTIES.

Branch Factory at WINDSOR, ONT.





1890 July -
The Ojibwa Mining Journal
William J. Roberts

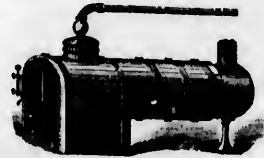
Selater Asbestos Manufacturing Company,

85 St. Peter and 48 to 50 Foundling Street,

MONTREAL.



Sole Representatives in the
Dominion for following—



**MAGNESIA SECTIONAL PIPE AND BOILER COVERINGS.
MAGNESIA PLASTIC BLOCK COVERINGS.**

NOW IN USE BY THE PRINCIPAL STEAM USERS IN AMERICA.

THE BEST NON-CONDUCTOR KNOWN.

The excellent reputation enjoyed by the Manufacturers of all the materials which we carry in stock enables us to deal faithfully and successfully with our patrons.

Our Stock is complete in every department and cannot be surpassed in the Dominion as to quality and quantity.

Our undertakings will be conducted in such a manner as to inspire confidence.

ENGINEERS' SUPPLIES OF EVERY DESCRIPTION A SPECIALTY.

BELL TELEPHONE No. 811.

McKINLEY & NORTHWOOD,

HAIRDWARE MERCHANTS.

Plumbers, Gas and Steamfitters, Tinsmiths and Roofers, Hot Water and Hot Air Heating and Bells.

TELEPHONE 427.

ESTIMATES ON APPLICATION.

ADDRESS:

56 & 58 RIDEAU STREET,
OTTAWA, ONT.

G. C. PHILPOTT,

BUILDER * AND * CONTRACTOR,

Bricklaying. Boiler Setting,
Repairing, etc., a Specialty.

JOBGING PROMPTLY ATTENDED TO.

OFFICE AND RES.:

303 ST. CHARLES BORROMEE ST.,
MONTREAL.

INDEX TO ADVERTISERS.

NAME OF FIRM.	PAGE.		PAGE.		PAGE.
Baile, A.	79	Comet Compound Co.	81	Kellogg & Co., E. H.	23
Birkett, Thos.	91	Crosby Steam Gage & Valve Co.	83	Laurie Engine Co.	61
Boiler Inspection & Insurance Co.	9	Dodge Wood Split Pulley Co.	21	Leonard & Sons.	41
Bremner, Alex.	75	Earle, S. R.	79	Leslie, Jas.	77
Brush, Geo.	49	Ellard, W. J.	83	May & Sons, Geo.	91
Hushnell Oil Co., The.	11	Fensom Elevator Works, The.	15	McCull Bros. & Co.	71
Canada Machinery Agency.	63	Fleck, Alex., Jr.	79	McCrory, P.	79
Canada Machinery Supply.	33	French, E. C.	85	McDougall, John.	55
Canadian Engineer.	83	Garth & Co.	37	McKinley & Northwood.	96
Canadian General Electric Co.	73	Goldie & McCulloch Co., Ltd., The.	19	McLaren, W. D.	47
Canadian Mineral Wool Co.	13	Gormley, Frank.	79	Meldrum Bros.	71
Campbell, W. J. & Co.	81	Gurd & Co., Chas.	83	Miller Bros. & Toms.	77
Cassidy, Bonner & Co.	77	Gurney, Tilden Co., Ltd., The.	60	Mitchell, R. & Co.	59
Cavanagh Co., The Edward.	77	Hamilton Brass M'fg Co.	67	Mount, E. C.	85
Clendinning & Son Co., Ltd., The Wm.	51	Heintzman & Co.	27	Northy M'fg Co., Ltd.	51
Cohen & Son, L.	85	Hine & Robertson.	93	Packard Electric Co., Ltd.	77
		Jenkins Bros.	71	Penberthy Injector Co.	93
				Philpott, G. C.	96
				Reid Bros. & Co.	25
				Rice, Lewis & Co.	29
				Robb Engineering Co., Ltd.	31
				Robertson, F.	45
				Robertson, R.	81
				Robin & Sudler.	53
				Rodden Wm.	43
				Rogers & Co., Samuel.	17
				Sclater Asbestos M'fg Co.	95
				Sclater, Wm., & Co.	35
				Spittal, Alex.	87
				Standard Lubricating Oil Co.	85
				Stationary Engineer.	83
				Toronto Electric Motor Co.	73
				Troy Laundry Machinery Co.	87
				Waterous Engine Works Co.	65
				Williams, A. R.	33
				Wilson, Jas., & Co.	39

TT,
RACTOR,

etting,
lty.

D TO.

EE ST.,

.....	25
.....	29
Co., Ltd. . .	31
.....	45
.....	81
.....	53
.....	43
uel.....	17
fsg Co.....	95
.....	35
.....	87
g Oil Co ..	85
.....	83
otor Co ..	73
inery Co ..	87
Vorks Co ..	65
.....	33
.....	39

